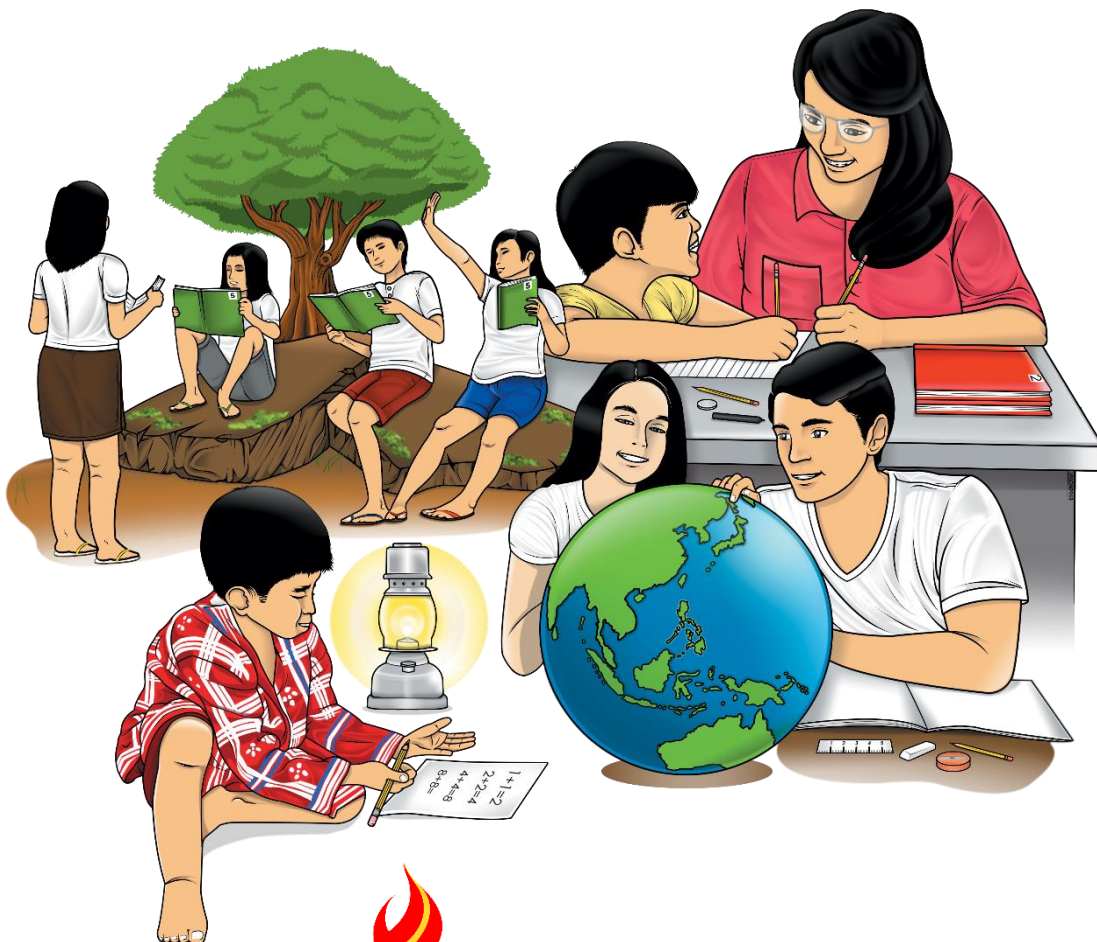


# English

## Quarter 4 – Module 3: Giving Expanded Definitions of Words



**English – Grade 10**  
**Alternative Delivery Mode**  
**Quarter 4 – Module 3: Giving Expanded Definitions of Words**  
**First Edition, 2020**

**Republic Act 8293, section 176** states that: No copyright shall subsist in any work of the Government of the Philippines. However, prior approval of the government agency or office wherein the work is created shall be necessary for exploitation of such work for profit. Such agency or office may, among other things, impose as a condition the payment of royalties.

Borrowed materials (i.e., pictures, photos, brand names, trademarks, etc.) included in this book are owned by their respective copyright holders. Every effort has been exerted to locate and seek permission to use these materials from their respective copyright owners. The publisher and authors do not represent nor claim ownership over them.

Published by the Department of Education  
Secretary: Leonor Magtolis Briones  
Undersecretary: Diosdado M. San Antonio

**Development Team of the Module**

**Writer:** Rodena G. Ancheta

**Editor:** Armi Victoria A. Fiangaan

**Illustrator:**

**Layout Artist:**

**Management Team:** Estela L. Cariño  
Carmel F. Meris  
Ethielyn Taqued  
Edgar H. Madlaing  
Juliet H. Sannad  
Loida C. Mangangey

Printed in the Philippines by \_\_\_\_\_

**Department of Education-Cordillera Administrative Region(CAR)**

Office Address: DepEd – CAR Complex Wangal, La Trinidad, Benguet  
Telefax: Fax: (074) 422-40-74 Tel: (074) 422-13-18  
E-mail Address: car@deped.gov.ph

**10**

# **English**

## **Quarter 4 – Module 3: Giving Expanded Definitions of Words**

# **Introductory Message**

This Self-Learning Module (SLM) is prepared so that you, our dear learners, can continue your studies and learn while at home. Activities, questions, directions, exercises, and discussions are carefully stated for you to understand each lesson.

Each SLM is composed of different parts. Each part shall guide you step-by-step as you discover and understand the lesson prepared for you.

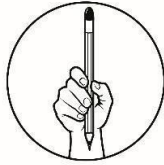
Pre-tests are provided to measure your prior knowledge on lessons in each SLM. This will tell you if you need to proceed on completing this module or if you need to ask your facilitator or your teacher's assistance for better understanding of the lesson. At the end of each module, you need to answer the post-test to self-check your learning. Answer keys are provided for each activity and test. We trust that you will be honest in using these.

In addition to the material in the main text, notes to the Teacher are also provided and to our facilitators and parents for strategies and reminders on how they can best help you on your home-based learning.

Please use this module with care. Do not put unnecessary marks on any part of this SLM. Use a separate sheet of paper in answering the exercises and tests. Do not forget to read the instructions carefully before performing each task.

If you have any questions in using this SLM or any difficulty in answering the tasks in this module, do not hesitate to consult your teacher or facilitator.

Thank you.



## ***What I Know***

This is the pre-assessment section given to check your prior knowledge about the topic to be discussed in this module. Please do not write anything on the pages of this module. Use a clean sheet of paper for your answers.

A. Direction: Read each text and identify if it is an example of an expanded definition or not. Write **YES** if it is an example of an expanded definition, and **NO** if not. Please write your answers on a clean sheet of paper.

1. An electronic design engineer is an electrical engineer or electronic and communication engineer who designs electronic circuits and systems. The design may be original, a development, or modification of existing ones. Applications are biomedical, communications, industrial control, analytical instruments, image processing, consumer electronics, and automation. By discipline, they are digital, analog, micro-processor based or very large-scale integrated circuits (VLSIC) (Gonzales, et al., 2017).
2. Formal language is the language used when writing for professional or academic purposes like university assignments (uts.edu.au, n.d.).
3. Speed is a concept that marks our day. Sluggishness is out. Speed is demanded by industry which is constantly on the look-out for new inventions. Sluggishness is penalized, especially in industries where compensation depend upon output. Speed is the attractive come-on for short-term courses in cooking, computerizing, sewing, diving, learning a new language, and others. The slower long-term courses are not so appealing. Instant coffee is usually preferred to coffee that needs to be boiled. Yes, speed is the word of the day (Gorgon, et al., 2010).
4. COVID-19 is a potentially severe, primarily respiratory illness caused by a coronavirus and characterized by fever, coughing, and shortness of breath (dictionary.com, 2021).
5. Pandemic is an outbreak of a disease that occurs over a wide geographic area (such as multiple countries or continents) and typically affects a significant proportion of the population: a pandemic outbreak of a disease (Merriam-Webster, 2021).

B. Direction: Arrange chronologically the sentences to form a definition paragraph. Use letters A, B, C, D, and E. Write letter A for the first sentence and the other letters for the succeeding sentences.

- \_\_\_\_ 1. Formal definitions generally include three elements: (1) a term, (2) class; and (3) differentiating features, or the word or phrase that makes it different with the others from the same class.
- \_\_\_\_ 2. Meanwhile, informal definitions express the meaning of a term partially or incompletely.
- \_\_\_\_ 3. A definition can be formal or informal.
- \_\_\_\_ 4. The definitions provided in dictionaries are examples of formal definition.
- \_\_\_\_ 5. They are frequently based on the writers' experience so that they are not universal.



## **What's In**

### **Activity 1: Define the Word**

Using a dictionary, look for the definition of the word “crystal”. How is the word defined? Are you satisfied with the definition that you have read? Do you think you can add more to the definition? Yes, you can by giving the expanded definition of the word. Look at the expanded definition of crystals below and compare with the definition that you got from the dictionary.

*A crystal is any solid material in which the component atoms are arranged in a definite pattern and whose surface regularity reflects its internal symmetry. In a crystal, all of the atoms (or ions) are arranged in a regular grid pattern. For example, in the case of table salt (NaCl), the crystals are made up of cubes of sodium (Na) ions and chlorine (Cl) ions. Each sodium ion is surrounded by six chlorine ions. Each chlorine ion is surrounded by six sodium ions. It's very repetitive, which is exactly what makes it a crystal (Amsen, 2019 and Mahan, 2021).*

Does the expanded definition give you a better idea on what crystals are?

In this lesson, you will learn to give expanded definitions of words that can help you present concepts into complete and clear manner.

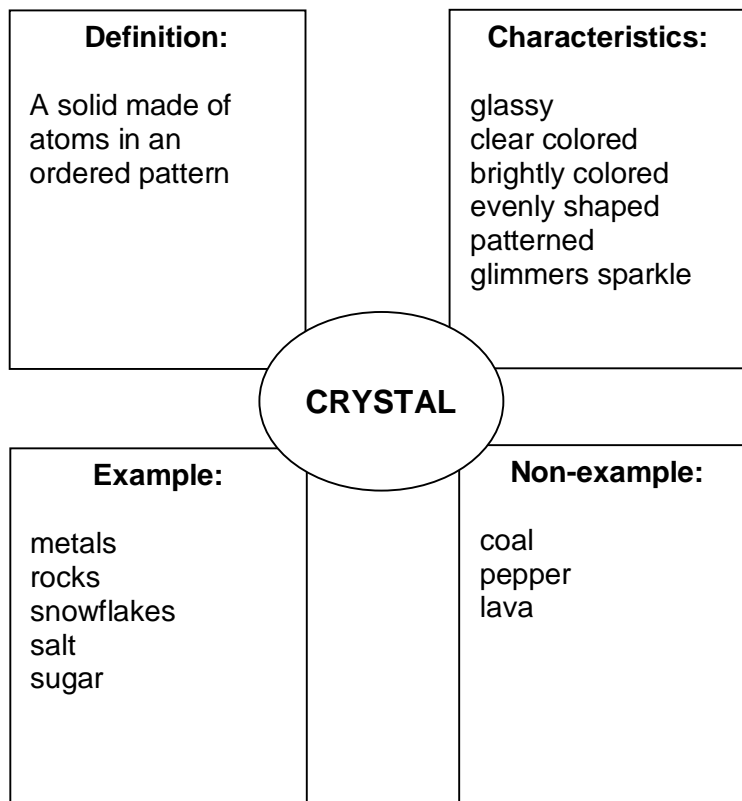


## What's New

### Activity 2: Map the Word

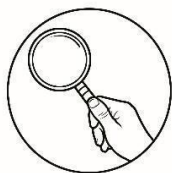
Here is a different presentation of the definition of the word “crystal”. Study the model map on crystals and answer the questions that follow.

#### The Model Map on Crystals



Source: *Essential English 10* by Gonzales, et al.

1. What is the term being defined?  
\_\_\_\_\_
2. What aspects of the definition were considered in the graphic organizer?  
\_\_\_\_\_
3. Was the graphic organizer helpful to you? In what way?  
\_\_\_\_\_



## What is It

**Expanded definition** is used to define technical terms with a very detailed explanation, sometimes, with the use of examples and visuals. Expanded definitions are usually found in academic texts (Gonzales, et al., 2017).

Here are ways on how to expand a definition into a paragraph:

### 1. Expanding by Giving an Example

*Speed is a concept that marks our time. Everybody is in a hurry to go somewhere. Industry is constantly demanding new inventions that will speed up production so that the constant cry of the bosses to the workmen is speed it up! The maker of automobiles boasts of the newest type of a car which is faster than the old model. Shoppers push and shove each other all about the counters. All are in a hurry to get something. People who are going to school, shop, or office rush breathlessly to do important tasks, they gulp their food and swallow it in haste. Restless “hunters of fun” crowd into places of entertainment. Most of these people cannot sit still. At a movie, they tap their feet or finger in impatience. Yes, speed is the word of the day (Gorgon, et al., 2010).*

By studying the paragraph above, can you identify the word being defined? Can you also give examples that were stated to expand the definition of speed being “a concept the marks our time”?

### 2. Expanding by Comparing and Contrasting

*Speed is a concept that marks our day. Sluggishness is out. Speed is demanded by industry which is constantly on look-out for new inventions. Sluggishness is penalized, especially in industries where compensation depends upon output. Speed is the attractive come-on for short-term courses in cooking, computerizing, sewing, diving, learning a new language, and others. The slower long-term courses are not so appealing. Instant coffee is usually preferred to coffee that needs to be boiled. Yes, speed is the word of the day (Gorgon, et al., 2010).*

Looking at the given example, identify which is speed compared to in the given definition. How is speed different from sluggishness?

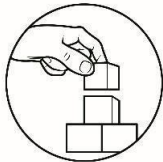
### 3. Expanding by Describing a Process

*The process of speeding up in a vehicle begins with the setting of the gear level to the first gear. This moves the vehicle from a stationary to a slow speed of about less than ten kilometers per hour (kph). Gradually you shift the gear to the next, pressing the accelerator pedal at the same time to attain a speed between 10-30 kph. You pick up more speed by shifting gears to the next higher levels at speed beyond 30 kph. To do this, however along with the shift or fourth gear, ever-increasing pressure must be exerted on the accelerator. The only time*



*you lift your foot from the accelerator is when you shift gears, so that you can step on the clutch pedal simultaneously with the shifting. After releasing the clutch pedal, you immediately step on the accelerator pedal while picking up speed. Maximum speed is attained once you shift to the fourth, or in the case of some vehicles, the fifth gear, at which you travel at speeds of 80 kph or above (Gorgon, et al., 2010).*

Is the definition about speed? Were the parts of the process presented from beginning to end?



## **What's More**

### **Activity 3: My Definition**

Study the definition below and answer the questions that follow.

For me, the word love means trust, friendship, and unselfishness. First of all, love means trust because when you trust someone, you can talk to him/her about anything. For example, I trust my girlfriend 100%. It is because I trust her that I know I can tell her anything, and that is why I love her. Furthermore, I believe that love means friendship because the people who you spend time with are your friends, and if you do not love them, then why would you hang out with them? To illustrate, I love my two best friends because they are like brothers to me. We are always laughing and protecting each other. Finally, love means unselfishness because when you love someone and they love you back, there should always be sharing. For instance, my next-door neighbor's wife never shares anything with her husband, such as food, drinks, possessions, etc. I sure do not see a whole lot of love there. For me, love means the above three things (Pardede, 2011).

1. What is the word being defined?

---

2. How was the definition being expanded?

---

3. If you were to expand further the definition, what are you going to add?

---

---

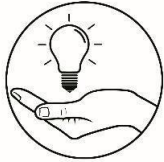
---

**Activity 4: Understand the Word**

Here is a definition taken from an academic text. Study how the word is being defined and answer the questions asked.

*An electronic design engineer is an electrical engineer or electronic and communication engineer who designs electronic circuits and systems. The design may be original, a development, or modification of existing ones. Applications are biomedical, communications, industrial control, analytical instruments, image processing, consumer electronics, and automation. By discipline, they are digital, analog, micro-processor based or very large-scale integrated circuits (VLSIC) (Gonzales, et al., 2017).*

1. What is the term being defined?  
\_\_\_\_\_
2. Does the writer include a formal definition in the paragraph?  
\_\_\_\_\_
3. How did the writer expand the definition of the term being defined? Support your answer.  
\_\_\_\_\_
4. Give your own example of an expanded definition of the term.  
\_\_\_\_\_  
\_\_\_\_\_



**What I Have Learned**

**Activity 5: Define the Word**

You write a one-paragraph essay with 5-10 sentences to define the word “family”. You use any of the given ways on how to expand a definition into a paragraph. 20 points.

---

---

---

---

---

---

---

---

---

---

**RUBRIC IN EXPANDING DEFINITION OF WORDS (20 POINTS)**

	<b>5</b>	<b>4</b>	<b>3</b>	<b>2</b>
<b>Sequencing</b>	Details are placed in a logical order and the way they are presented effectively keeps the interest of the reader. A variety of thoughtful transitions are used. They clearly show how ideas are connected.	Details are placed in a logical order, but the way in which they are presented/introduced sometimes makes the writing less interesting. Transitions clearly show how ideas are connected, but there is little variety.	Some details are not in a logical or expected order, and this distracts the reader. Some transitions work well; but connections between other ideas are fuzzy.	Many details are not in a logical or expected order. There is little sense that the writing is organized. The transitions between ideas are unclear or nonexistent.
<b>Support for Topic</b>	Relevant, telling, quality details give the reader important information.	Supporting details and information are relevant, but one key issue or portion is unsupported.	Supporting details and information are relevant, but several key issues or portions are unsupported.	Supporting details and information are typically unclear or not related to the topic.
<b>Definition</b>	Clear and well-defined expanded definition; does an exemplary job of supporting thesis.	An expanded definition has been created; does a good job of supporting thesis.	An expanded definition is created. The author attempts to support a thesis.	An expanded definition is attempted; little support for thesis.
<b>Conventions</b>	Writer makes no error that distracts the reader from the content.	Writer makes one error that distracts the reader from the content.	Writer makes two errors that distract the reader from the content.	Writer makes 3 or more errors that distract the reader from the content.



## ***What I Can Do***

Read and understand the following article about “Research” then do the given activities.

### **Research**

Research is "creative and systematic work undertaken to increase the stock of knowledge". It involves the collection, organization, and analysis of information to increase understanding of a topic or issue. A research project may be an expansion on past work in the field. To test the validity of instruments, procedures, or experiments, research may replicate elements of prior projects or the project as a whole.

Research has been defined in a number of different ways, and while there are similarities, there does not appear to be a single, all-encompassing definition that is embraced by all who engage in it.

One definition of research is used by the OECD, "Any creative systematic activity undertaken in order to increase the stock of knowledge, including knowledge of man, culture and society, and the use of this knowledge to devise new applications."

Another definition of research is given by John W. Creswell, who states that "research is a process of steps used to collect and analyze information to increase our understanding of a topic or issue". It consists of three steps: pose a question, collect data to answer the question, and present an answer to the question.

The Merriam-Webster Online Dictionary defines research in more details as "studious inquiry or examination; especially investigation or experimentation aimed at the discovery and interpretation of facts, revision of accepted theories or laws in the light of new facts, or practical application of such new or revised theories or laws".

### **Forms of Research**

Scientific research is a systematic way of gathering data and harnessing curiosity. This research provides scientific information and theories for the explanation of the nature and the properties of the world. It makes practical applications possible. Scientific research is funded by public authorities, by charitable organizations and by private groups, including many companies. Scientific research can be subdivided into different classifications according to their academic and application disciplines.

Artistic research, also seen as 'practice-based research', can take form when creative works are considered both the research and the object of research itself. It is the debatable body of thought which offers an alternative to purely scientific methods in research in its search for knowledge and truth.

Historical research. The historical method comprises the techniques and guidelines by which historians use historical sources and other evidence to research and then to write history. There are various history guidelines that are commonly used by historians in their work, under the headings of external criticism, internal criticism, and synthesis. This includes lower criticism and sensual criticism. Though items may vary depending on the subject matter and researcher, the following concepts are part of most formal historical research: Identification of origin date; Evidence of localization; Recognition of authorship; Analysis of data; Identification of integrity; and Attribution of credibility.

Documentary research is the use of outside sources, documents, to support the viewpoint or argument of an academic work. The process of documentary research often involves some or all of conceptualizing, using and assessing documents. The analysis of the documents in documentary research would be either quantitative or qualitative analysis (or both). The key issues surrounding types of documents and our ability to use them as reliable sources of evidence on the social world must be considered by all who use documents in their research.

### **Steps in conducting research**

Research is often conducted using the hourglass model structure of research. The hourglass model starts with a broad spectrum for research, focusing in on the required information through the method of the project (like the neck of the hourglass), then expands the research in the form of discussion and results. The major steps in conducting research are:

- Identification of research problem
- Literature review
- Specifying the purpose of research
- Determining specific research questions
- Specification of a conceptual framework, sometimes including a set of hypotheses
- Choice of a methodology (for data collection)
- Data collection
- Verifying data
- Analyzing and interpreting the data
- Reporting and evaluating research
- Communicating the research findings and, possibly, recommendations

*Source: <https://en.wikipedia.org/wiki/Research>*

### **Activity 6: Define and Expand**

Using the article as your reference and the rubric in expanding definition of words as your guide, write a paragraph expanding the definition of research with 100 words only. You use any of the strategies in expanding definitions into paragraph.

---

---

---

---

---

---

---

---



## Assessment

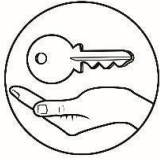
A. Direction: Read each text and identify if it is an example of an expanded definition or not. Write **YES** if it is an example of an expanded definition, and **NO** if not. Please write your answers on a clean sheet of paper.

1. An electronic design engineer is an electrical engineer or electronic and communication engineer who designs electronic circuits and systems. The design may be original, a development, or modification of existing ones. Applications are biomedical, communications, industrial control, analytical instruments, image processing, consumer electronics, and automation. By discipline, they are digital, analog, micro-processor based or very large-scale integrated circuits (VLSIC) (Gonzales, et al., 2017).
2. Formal language is the language used when writing for professional or academic purposes like university assignments (uts.edu.au, n.d.).
3. Speed is a concept that marks our day. Sluggishness is out. Speed is demanded by industry which is constantly on the look-out for new inventions. Sluggishness is penalized, especially in industries where compensation depend upon output. Speed is the attractive come-on for short-term courses in cooking, computerizing, sewing, diving, learning a new language, and others. The slower long-term courses are not so appealing. Instant coffee is usually preferred to coffee that needs to be boiled. Yes, speed is the word of the day (Gorgon, et al., 2010).
4. COVID-19 is a potentially severe, primarily respiratory illness caused by a coronavirus and characterized by fever, coughing, and shortness of breath (dictionary.com, 2021).
5. Pandemic is an outbreak of a disease that occurs over a wide geographic area (such as multiple countries or continents) and typically affects a significant proportion of the population: a pandemic outbreak of a disease (Merriam-Webster, 2021).

B. Direction: Arrange chronologically the sentences to form a definition paragraph. Use letters A, B, C, D, and E. Write letter A for the first sentence and the other letters for the succeeding sentences.

- \_\_\_\_ 1. Formal definitions generally include three elements: (1) a term, (2) class; and (3) differentiating features, or the word or phrase that makes it different with the others from the same class.
- \_\_\_\_ 2. Meanwhile, informal definitions express the meaning of a term partially or incompletely.
- \_\_\_\_ 3. A definition can be formal or informal.
- \_\_\_\_ 4. The definitions provided in dictionaries are examples of formal definition.
- \_\_\_\_ 5. They are frequently based on the writers' experience so that they are not universal.





## Answer Key

<p><b>POST-ASSESSMENT</b></p> <p>A. 1. Yes 2. No 3. Yes 4. No 5. No</p> <p>B. 1. C 2. D 3. A 4. B 5. E</p>	<p><b>ACTIVITY 4</b></p> <p>1. electronic design engineer 2. Yes 3. answers may vary 4. answers may vary</p> <p><b>ACTIVITY 5</b></p> <p>answers may vary</p> <p><b>ACTIVITY 6</b></p> <p>answers may vary</p>	<p><b>ACTIVITY 2</b></p> <p>1. Crystals 2. Model Map 3. answers may vary</p> <p><b>ACTIVITY 3</b></p> <p>1. love 2. by giving examples 3. answers may vary</p>	<p><b>WHAT I KNOW</b></p> <p>A. 1. Yes 2. No 3. Yes 4. No 5. No</p> <p>B. 1. C 2. D 3. A 4. B 5. E</p>
--	--	--	--



## References

- Amsen, E. "What is a Crystal?" *Let's Talk Science* (2019):  
<https://letstalkscience.ca/educational-resources/stem-in-context/what-a-crystal>.
- Mahan, Gerald D. "Crystal." *Britannica* (2021):  
<https://www.britannica.com/science/crystal>.
- Dictionary.com. "COVID-19." Accessed February 11, 2021.  
<https://www.dictionary.com/browse/covid-19>.
- Frontiercsd.org. "Extended Definition Essay Rubric." Accessed February 14, 2021.  
<https://www.frontiercsd.org/cms/lib/NY19000265/Centricity/Domain/70/Extended%20Definition%20Essay%20Rubric.pdf>.
- Gonzales, C. T. et al. *Essential English 10 Worktext in Literature and Language*. Manila: Rex Bookstore, 2017.
- Gorgon, E. R. et al. *English Expressways IV*. Quezon City: Book Media Press, Inc./Printwell Inc., 2010.
- Merriam-Webster.com Dictionary. "Pandemic." Accessed February 14, 2021.  
<https://www.merriam-webster.com/dictionary/pandemic>.
- Pardede, P. "Paragraphs of Definition." *Paragraph Writing* (2011):  
<https://myreadwritebooster.wordpress.com/writing-3/2-paragraph-writing/12-paragraphs-of-definition/>.
- Steve Vincent's Web Site. "ITS 311: IT Communications." Accessed February 14, 2021. [https://stevevincent.info/ITS311\\_7.htm](https://stevevincent.info/ITS311_7.htm).
- UTS. "Formal and Informal Language." Accessed February 13, 2021.  
<https://www.uts.edu.au/current-students/support/helps/self-help-resources/grammar/formal-and-informal-language#:~:text=Formal%20language%20is%20less%20personal,is%20more%20casual%20and%20spontaneous>.
- Wikipedia. "Research." Accessed February 13, 2021.  
<https://en.wikipedia.org/wiki/Research>.

**For inquiries or feedback, please write or call:**

Department of Education - Bureau of Learning Resources (DepEd-BLR)

Ground Floor, Bonifacio Bldg., DepEd Complex  
Meralco Avenue, Pasig City, Philippines 1600

Telefax: (632) 8634-1072; 8634-1054; 8631-4985

Email Address: [blr.lrqad@deped.gov.ph](mailto:blr.lrqad@deped.gov.ph) \* [blr.lrpd@deped.gov.ph](mailto:blr.lrpd@deped.gov.ph)