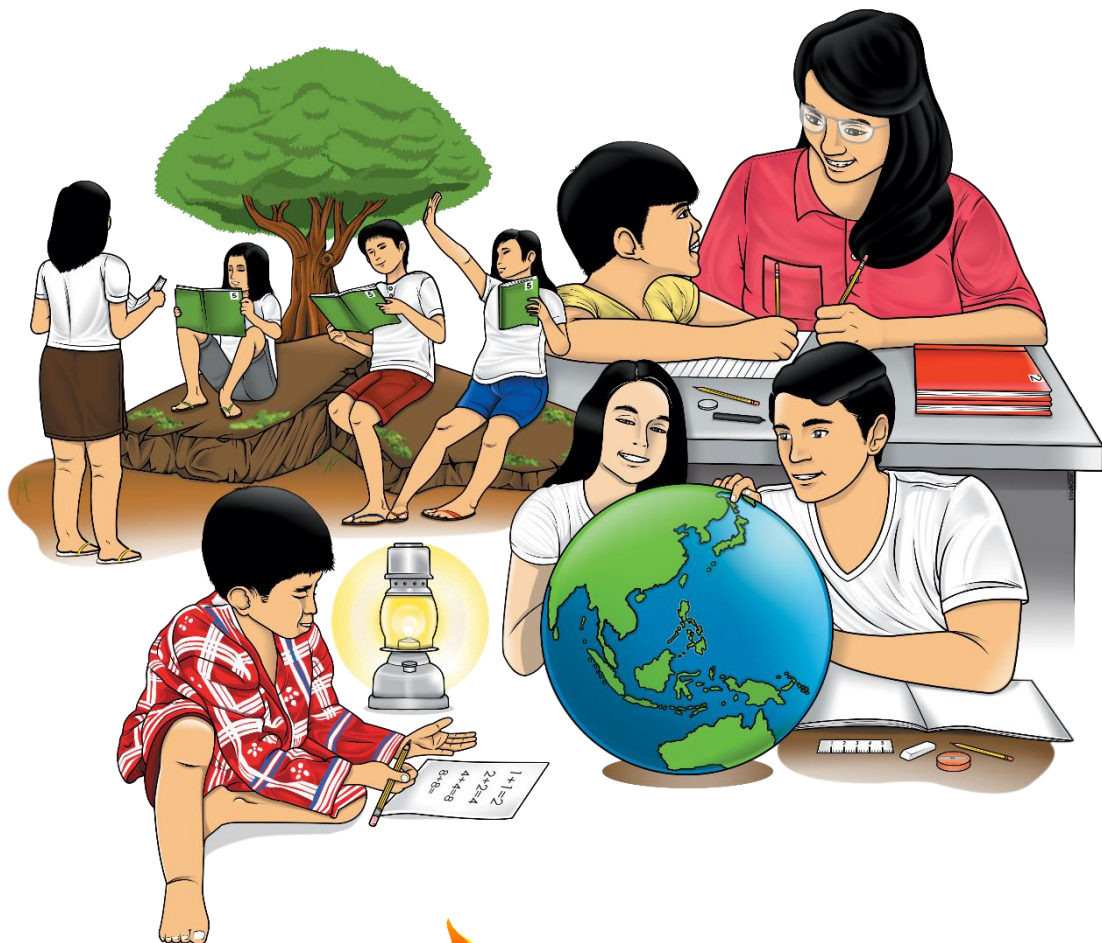


# Arts

## Quarter 4 – Module 1: Theater Arts: Themes and Elements of Art Applied to Performance



**Arts Grade 10**  
**Alternative Delivery Mode**  
**Quarter 4 Module 1 – Theater Arts: Themes and Elements of Art Applied to Performance**  
**First Edition, 2020**

**Republic Act 8293, section 176** states that: No copyright shall subsist in any work of the Government of the Philippines. However, prior approval of the government agency or office wherein the work is created shall be necessary for exploitation of such work for profit. Such agency or office may, among other things, impose as a condition the payment of royalties.

Borrowed materials (i.e., songs, stories, poems, pictures, photos, brand names, trademarks, etc.) included in this module are owned by their respective copyright holders. Every effort has been exerted to locate and seek permission to use these materials from their respective copyright owners. The publisher and authors do not represent nor claim ownership over them.

Published by the Department of Education  
Secretary: Leonor Magtolis Briones  
Undersecretary: Diosdado M. San Antonio

<b>Development Team of the Module</b>		
<b>Writer:</b>	Maricel L. Burgos	Raphy R. Gacilos
	Christine C. Britos	
<b>Editors:</b>	Winifredo P. Pe Benito	Susana V. Vicerra
	Maribeth B. Bista	Flora A. Tinaza
<b>Reviewers:</b>	Francis A. Domingo	Marlon G. Taloza
	Gina A. Amoyen	Jowell T. Pilotin
	Alma R. Tabilang	
<b>Illustrator:</b>	Rogelio Berbano Jr.	
<b>Layout Artists:</b>	Lubeth R. Cabatu	Janssen Louel C. Dabuet
	Sheryl R. Rialubin	
<b>Management Team:</b>	Tolentino G. Aquino	
	Arlene A. Niro	Maria Salome R. Abero
	Gina A. Amoyen	Alma R. Tabilang
	Editha T. Giron	

Printed in the Philippines by \_\_\_\_\_

**Department of Education – Region I**

Office Address: Flores St., Catbangan, City of San Fernando, La Union

Telefax: (072) 682-2324; (072) 607-8137

E-mail Address: region1@deped.gov.ph

**10**

# **Arts**

**Quarter 4 – Module 1:  
Theater Arts: Themes and  
Elements of Art Applied to  
Performance**

## **Introductory Message**

This Self-Learning Module (SLM) is prepared so that you, our dear learners, can continue your studies and learn while at home. Activities, questions, directions, exercises, and discussions are carefully stated for you to understand each lesson.

Each SLM is composed of different parts. Each part shall guide you step-by-step as you discover and understand the lesson prepared for you.

Pre-tests are provided to measure your prior knowledge on lessons in each SLM. This will tell you if you need to proceed on completing this module or if you need to ask your facilitator or your teacher's assistance for better understanding of the lesson. At the end of each module, you need to answer the post-test to self-check your learning. Answer keys are provided for each activity and test. We trust that you will be honest in using these.

In addition to the material in the main text, Notes to the Teacher are also provided to our facilitators and parents for strategies and reminders on how they can best help you on your home-based learning.

Please use this module with care. Do not put unnecessary marks on any part of this SLM. Use a separate sheet of paper in answering the exercises and tests. And read the instructions carefully before performing each task.

If you have any questions in using this SLM or any difficulty in answering the tasks in this module, do not hesitate to consult your teacher or facilitator.

Thank you.



## ***What I Need to Know***

Hello! How are you today? Welcome to another learning experience as you go through this module on performing arts – theater. There are prepared activities which were carefully designed for you to experience theater arts in a different way. In this quarter, you will encounter a more interesting and complex outcome of all the acquired knowledge and developed skills from the last three quarters into an original performance.

Remember to carefully read the instruction before answering each activity and assessment as part of the module. Please answer honestly.

**Focus on the subject!** This module is made readily accessible to you as a learner along with the specific lessons that are needed to complete the self-study program and enrichment. It covers the objectives of the lesson, pre-assessment, lesson proper, post-assessment, summary of learning, answer keys, and the references.

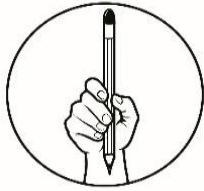
You can answer the module in your most convenient time and place. If you really need help in creating your artwork, assistance of your parents, siblings or friends is allowed, but you must only ask them the procedures. Do not let them finish the task for you. Remember that experience is the best teacher.

Please **DO NOT WRITE** anything on this module. Kindly use separate sheets of paper in answering the pretest, self- check exercises, and posttest.

**READY? 1, 2, 3...GO!**

### **Learning Competencies:**

1. Explains how an idea or theme is communicated in a selected performance through the integration of musical sounds, songs, dialogue and dance. **(A1OEL-IVb-4)**;
2. Analyses examples of plays based on theatrical forms, and elements of art as applied to performance. **(A1OEL-Iva-2)**;
3. Illustrates how the different elements are used to communicate the meaning. **(A1OEL-IVc-3)**; and
4. Explains the uniqueness of each original performance. **(A1OPL-IVh-1)**.



## ***What I Know***

### **Pretest**

#### **A. IDENTIFICATION**

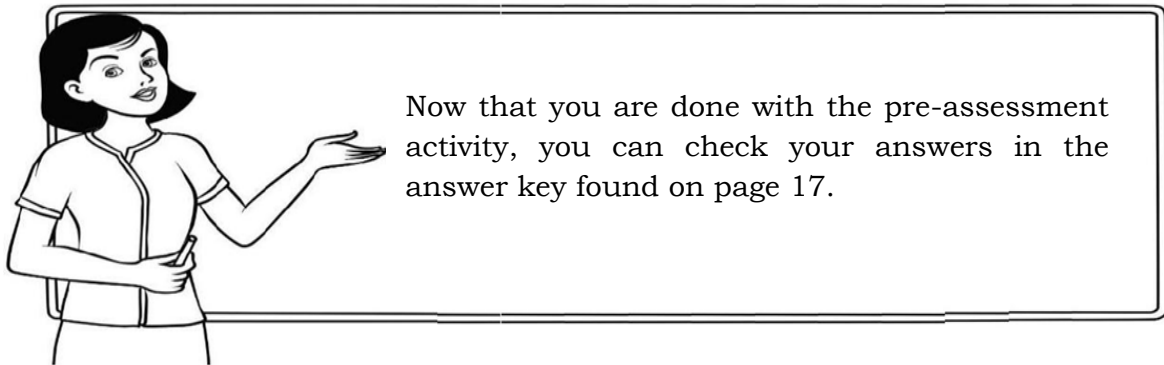
**Directions:** Identify what is being described in each item by filling in the missing letters to form the correct answer. Write your answers in your activity notebook.

1. It is a form of art that combines all other forms of art in which a story is told either through dialogue and actions, and song or dance in a live performance.  
T H \_ \_ T \_ R
2. It is a three-act melodrama that is performed in both spoken and sung words.  
\_ A \_ S W E \_ A
3. These are two equally important elements in theater play that set different moods and emotions for the audience.  
S \_ U N \_ \_ and M \_ \_ \_ I C
4. It is a play that depicts the battle between Christians and Moros on love and vengeance and religious themes.  
\_ O \_ O M \_ R O
5. It helps tell the story by helping the actor in his/her characterization.  
C \_ \_ \_ T U \_ \_
6. This refers to all the visual and other special effects added in the show to create a quality and realistic play.  
\_ P E \_ T A C \_ E
7. This is the theatrical play which paved the way to Lea Salonga's recognition as a world-class talent.  
M \_ S \_ \_ S A \_ G \_ N
8. A person who writes the text of a play.  
P \_ A Y W \_ \_ G \_ T
9. This play evolves mainly on the sufferings of Jesus Christ before He was laid to death.  
S \_ N \_ \_ U L O
10. It is a variety show that consists of comedic and dramatic skits in songs and dances.  
\_ O D A \_ \_ L

## B. TRUE OR FALSE

**Directions:** Write **T** if the statement is correct or **F** if the statement is wrong. Write your answers in your notebook.

1. Rhythm and movement are two different elements in theater play but complement each other.
2. Costumes, masks, makeup and accessories do not help at all in the characterization of the actors.
3. Sound and light effects greatly affect the quality of a play.
4. The principle on emphasis is used to highlight a certain scene which is remembered by the audience.
5. A play can never be successful if the actors and the production members do not fit in their roles.



## LESSON

# 1

# Philippine-based Theatrical Art Forms



## *What's In*

Art elements and processes do not apply only to forms of art like visual art, technology-based art and media-based art, but are also indispensable to performing arts like theater. The use of musical sounds, songs, dialogue and dance allows how an idea or theme in a certain performance is conveyed.



## *What's New*

### **IN 5 4 3 2 1 ... ACTION!**

**Directions:** Performing artists rehearse their lines and on-stage actions. In this activity, perform the listed actions in front of a mirror with the corresponding situations below.

1. Your right hand is up waving to a loved one who is about to leave.
2. You are tickled with the furry tail of your puppy.
3. Your bag was slashed after you accidentally bumped into a middle-aged man.
4. A crazy woman has a child who is dying due to an illness.





## ***What is It***

Theater arts is a collaborative form of art where live performers act on stage before a group of audience in a specific place carrying out a story. Live performances like theater plays demand the expertise and collaboration of each member in the production team as well as the cast to produce a high-quality performance. One of the best examples of theater plays is *Miss Saigon*, where Lea Salonga was selected to play the lead role as Kim.

### **Theatrical Forms**

#### **A. Tragedy**

It is a dramatic play portraying the struggle of a strong-willed protagonist against fate, as predestined by mysterious, divine, social, or psychological forces, culminating in disaster and usually caused by a flaw in the protagonist's character.

#### **B. Comedy**

It is a dramatic play of light and humorous character, typically with a cheerful and happy ending.

#### **C. Drama**

It is a play that is "for real". The characters represent realistic and everyday people.

#### **D. Melodrama**

It is a dramatic composition characterized by extravagant theatricality and the dominance of plot and physical action over characterization.

### **The Elements of Art as Applied to an Original Performance**

1. **Sound and Music.** These two elements set for the audience different moods and emotions. Through the use of different sounds, they provide different effects to the play that heighten the emotions of the characters and the audience. The sound effects also make the play more realistic and exciting. The use of sound and music in a play entails the incorporation of sound recording and editing techniques using applications for computers, tablets and Android phones.

2. **Gesture, Movement, and Dance.** These are bodily movements or actions that usually express emotions, character, and narrative actions with accompanying sound or music. Every single gesture, movement or dance step conveys a meaning or message.
3. **Costume, Mask, Makeup, and Accessories.** These comprise the visual effects, of which the main function is to enhance visibility and aesthetic value. They help make the character appear realistic according to the role he/she portrays.
4. **Spectacle.** This is something exhibited for view as something unusual, notable, or entertaining, especially an eye-catching or dramatic public display which may be regarded as impressive and breathtaking and on stage if visual, lighting, sound, music, costumes, dance, and special effects are properly manifested in a play.

### **Examples of Philippine Plays**

- **Sarswela**  
It is a type of melodrama in three acts where pieces are both spoken and sung. Aside from being a significant part of the Philippine history, it was also employed as a tool to fight against colonization.
- **Epic Poetry**  
Dating back to the pre-colonial period and commonly presented during festivals and gatherings, it is considered by scholars to be the highest point of Filipino folk literature. The usual topics are romance and adventure.
- **Duplo**  
It is a poetic debate presented through song and dance originating from indigenous courtship customs. In this type of play, poets use proverbs and riddles to present their suit to the woman of their choice.
- **Moro Moro**  
It is one of the most popular types of theater that and depicts the conflicts between the Moros and the Christians. Themes like love, and vengeance, and religion predominate.
- **Senakulo**  
It is also known as Passion play. This dramatization of the life and death of Jesus Christ has been a part of the lives of the Catholics and is celebrated during Holy Week.
- **Traditional Folkdance**  
It is one of the oldest forms of theater and thus an important part of our heritage today. These are dances that reflect the lives of the people in a certain place or region and describe their culture and origin.

- **Bodabil**

It is Vaudeville of American origin that became uniquely Filipino with the localization of the name, Bodabil. It is a variety show consisting of musical numbers and comedic and dramatic skits with songs and dances. It was popularized by Filipino artists like Dolphy, Anita Linda, and Atang dela Rama.

Great job! We are done with the discussion on art elements and theatrical forms as applied in original performance. I hope that you were able to grasp the concepts that you encountered previously. Now, work on the activities that await you. Good luck!



## ***What's More***

### **Activity 1: Let's Play!**

With the given link below, watch an excerpt of Miss Saigon then identify how the elements of arts are incorporated by answering the questions that follow:

*<https://www.youtube.com/watch?v=cwB3Zxh2gSE>*






### **Process Questions:**

1. What elements of arts were used in this scene? Briefly explain each.
2. How did the characters deliver their lines?
3. How did the characters portray their role? Did they justify the role they portrayed?
4. What did you observe with the setting of the play?
5. What sounds and music were used in the play?
6. Was the play spectacular? In what way?

## Activity 2: Best Picture!

**Directions:** Have a closer look at the picture inside each box. Classify each according to theatrical form. If internet access is available, you can watch the excerpt/reviews by clicking the provided link below it.

<b>Theatrical Play</b>	<b>Theatrical Form</b>
<p data-bbox="470 472 655 506" style="text-align: center;"><b>Miss Saigon</b></p>  <p data-bbox="221 831 903 864"><a href="https://www.youtube.com/watch?v=cwB3Zxh2gSE">https://www.youtube.com/watch?v=cwB3Zxh2gSE</a></p>	<p data-bbox="948 483 975 517">1.</p>
<p data-bbox="491 936 635 969" style="text-align: center;"><b>Rated PG</b></p>  <p data-bbox="221 1330 903 1364"><a href="https://www.youtube.com/watch?v=mG0OptDrchE">https://www.youtube.com/watch?v=mG0OptDrchE</a></p>	<p data-bbox="948 976 975 1010">2.</p>
<p data-bbox="504 1426 622 1460" style="text-align: center;"><b>Ibalong</b></p>  <p data-bbox="228 1839 898 1872"><a href="https://www.youtube.com/watch?v=fdqyVRGrH00">https://www.youtube.com/watch?v=fdqyVRGrH00</a></p>	<p data-bbox="948 1823 975 1856">3.</p>

### Bayubay ni Hesus



<https://www.youtube.com/watch?v=fdqyVRGrH00>

4.

## Lesson

# 2

## Elements of Art as Applied to an Original Performance



### *What's In*

In the previous lesson, you have learned about theatrical forms and elements as well as theatrical plays in the country. This field of theater arts has contributed much to the continuous growth and development of performing arts. There are different elements that served as seasonings to add more taste to each theatrical performance. These elements give more life and excitement to all theatrical performances. As you go through this lesson, you will be enlightened as to how these elements contribute to the overall impact of every theatrical performance.



## ***What's New***

### **Activity 1: Watch Me!**

**Directions:** Given the link, carefully watch the video and accomplish the task below (<https://m.youtube.com/watch?v=Z-tM8J86xtw>). Otherwise, if you do not have internet access, you can interview somebody who already watched the play entitled “Miss Saigon”. Write your answers on a separate sheet of paper.

Describe the play in terms of:

A. Sound and Music

---

---

---

B. Gesture, Movement and Dance

---

---

---

C. Costume, Mask, Makeup and Accessories

---

---

---

D. Spectacle

---

---

---



## ***What is It***

### **Elements of Art as Applied to an Original Performance**

In Lesson 1, the elements of theater arts such as music and sound, gestures, movement and dance, costume, mask, makeup, and accessories, and spectacle were discussed.

<b>ELEMENTS</b>	<b>HOW THESE ELEMENTS AFFECT THEATRICAL PLAY</b>
Sound and Music	These elements help set the mood of the play. They add suspense and capture the heart of the viewers. Adding appropriate sound and music to the play will make it more meaningful and impactful such that it will be remembered by the viewers.
Gesture, Movement, and Dance	These elements help in communicating the message to the viewers through the use of proper movement, gesture and dance. The role of the artist can be easily recognized through these elements.
Costume, Mask, Makeup and Accessories	These elements contribute to the characterization of each performer. They add realism to the play and make the artists convincing in their roles. It is also one way of showcasing the local culture or the culture found in the world of the play.
Spectacle	This element helps in making the play more visually pleasing. This element is also useful in letting the audience have a more defined sensory experience.

These elements of art are indispensable factors that affect the overall impact of a play. Aside from these elements, there are also principles of arts that an artist needs to consider in order to come up with a captivating play that is worth watching. These principles will be elaborated on as you go through this module.

## Principles of Art as Applied to an Original Performance

1. **Rhythm, Movement.** This principle guides the directors and other production staff of the play on the proper use of music and movement. These elements should contribute in setting the mood and tone of the play and the scenes.
2. **Balance.** This principle guides the director on how to achieve the proper balance and composition in terms of stage blockings, props, backdrops, costume and set design/set pieces. This will also guide the production staff in setting the right perspective of the play.
3. **Emphasis.** This principle guides the director on which part of the play should be emphasized. This will help in communicating to the audience the theme of the play.
4. **Harmony, Unity and Variety.** These principles guide the director on how to put the elements of arts like set design, costumes, spectacle, etc. in harmony. These elements should complement each other and also have variation to create a spectacular visual impact on the play.
5. **Proportion.** This principle guides the director as to how to make the play more realistic or stylized through proper use of space, height, width and sizes of the elements or materials to be used in the play.



### ***What's More***

#### **Activity 1: Visualize Me!**

**Directions:** Imagine yourself being a director of the famous teleserye “Ang Probinsyano”. Visualize your concept as to you are going to apply the different elements of arts to the set design, costume, and spectacle of a production of an original performance and then illustrate your ideas.



Your output will be rated with the use of the following rubric:

<b>Criteria</b>	<b>5</b>	<b>4</b>	<b>3</b>	<b>2</b>	<b>1</b>
<b>Creativity and Originality</b>	Exceptionally unique, detailed, and interesting work. Takes many creative risks and explores several options.	Generally unique, detailed, and interesting work. Takes some creative risks and explores some different options.	Somewhat unique, detailed, and interesting work. Some developing ideas can be seen in the artwork, but a true sense of originality is not evident.	Occasionally unique, detailed, and interesting work. Shows minimal risk and copy the idea to other outputs or examples.	Not unique, detailed, or interesting work and ideas or risks taken are not original.
<b>Use of Elements and Principles</b>	Exceptional understanding and application of the elements of theatre play and principles of arts were applied to original performance	Good understanding and application of the elements of theatre play and principles of arts were applied to original performance	Basic understanding and application of the elements of theatre play and principles of arts were applied to original performance	Minimal understanding and application of the elements of theatre play and principles of arts were applied to original performance	No understanding and application of the elements of theatre play and principles of arts were applied to original performance
<b>Craftsmanship</b>	Work was done neatly and with exceptional care and attention to detail	Work done neatly and with good care and attention to detail	Work done neatly and with basic care and attention to detail	Work done not so neat and with minimal care and attention to detail	Work done slovenly with no care or attention to detail
<b>Content and Idea</b>	Work shows exceptional understanding of the topic and the idea were exceptionally presented.	Work shows good understanding of the topic and the idea were presented good.	Work shows basic understanding of the topic and the idea were basically presented.	Work shows minimal understanding of the topic and the idea were minimally presented.	Work shows no understanding of the topic and the idea were not related to the topic.

## **Activity 2: What's Unique in Me!**

**Directions:** Given the different links, watch the video and explain the uniqueness of each play in terms of the elements of arts as applied to an original performance. If you do not have internet access, you can interview somebody who already watched the plays. Write your answers in your activity notebook.

1. <https://www.youtube.com/watch?v=12NdwEQhNBk> (The Lion, The Witch, and The Wardrobe)
  - a. Sound and Music
  - b. Gesture, Movement, and Sound
  - c. Costume, Mask, Makeup and Accessories
  - d. Spectacle
  
2. <https://www.youtube.com/watch?v=ub04xcEKwCY> (N.O.A.H)
  - a. Sound and Music
  - b. Gesture, Movement, and Sound
  - c. Costume, Mask, Makeup and Accessories
  - d. Spectacle
  
3. <https://www.youtube.com/watch?v=gTFMY9yKdSA> (Harana by Philippine Opera Company)
  - a. Sound and Music
  - b. Gesture, Movement, and Sound
  - c. Costume, Mask, Makeup and Accessories
  - d. Spectacle
  
4. <https://www.youtube.com/watch?v=XGgUgxck8UU> (Care Divas)
  - a. Sound and Music
  - b. Gesture, Movement, and Sound
  - c. Costume, Mask, Makeup and Accessories
  - d. Spectacle
  
5. <https://www.youtube.com/watch?v=loARV5IURVE> (Himala, Isang Musikal)
  - a. Sound and Music
  - b. Gesture, Movement, and Sound
  - c. Costume, Mask, Makeup and Accessories
  - d. Spectacle





## Assessment

### A. IDENTIFICATION

**Directions:** Complete the following statements by supplying the right word/s from the box below. Write your answers on your activity notebook.

Bodabil	Theater	Senakulo
Sarswela	Miss Saigon	Moro Moro
Spectacle	Costume	Sound and Music
Playwright	Lea Salonga	

1. The one who writes the text of a play.
2. A three-act melodrama that is performed in both spoken and sung words.
3. These are two equally important elements in theater play that set different moods and emotions for the audience.
4. This play evolves mainly on the sufferings of Jesus Christ before He was laid to death.
5. A play that depicts a battle between Christians and Moros on love and vengeance and religious themes.
6. It is worn by the character in order to portray his/ her role.
7. This refers to all visual and other special effects added to create a quality and realistic play.
8. This is the theatrical play which paved the way to Lea Salonga's recognition as a world-class talent.
9. It is a variety show that consists of comedic and dramatic skits in songs and dances.
10. It is a form of art that combines all other forms of art where a story is told either through dialogue and actions, and song or dance in a live performance.

## **B. TRUE OR FALSE**

**Directions:** Write **T** if the statement is correct or **F** if the statement is wrong. Write your answers in your notebook.

1. A play can still be spectacular even if the actors and production members do not fit in their roles.
2. Rhythm and movement are two different elements in theater play but complement each other.
3. Sound and light effects greatly affect the quality of a play.
4. The principle on emphasis is used to highlight a certain scene which is remembered by the audience.
5. Costumes, masks, makeup and accessories do not help at all in the characterization of the actors.



## **Answer Key**

<p><b>What I Know</b></p> <p><b>Pretest</b></p> <p>1. Theater 2. Sarswela 3. Sound and Music 4. Moro Moro 5. Costume 6. Spectacle 7. Miss Saigon 8. Playwright 9. Senakulo 10. Bodabil 11. T 12. F 13. T 14. T 15. F</p>
--

<p><b>Assessment</b></p> <p>1. Playwright 2. Sarswela 3. Sound and Music 4. Senakulo 5. Moro Moro 6. Costume 7. Spectacle 8. Miss Saigon 9. Bodabil 10. Theater 11. F 12. T 13. T 14. T 15. F</p>
---

<p><b>Lesson 1</b></p> <p><b>What's More</b></p> <p><b>Activity 1</b></p> <p>Answers may vary.</p> <p><b>Activity 2:</b></p> <p>1. Tragedy 2. Comedy 3. Epic poetry 4. Senakulo</p>
---

<p><b>Lesson 2</b></p> <p><b>What's More</b></p> <p><b>Activity 1:</b></p> <p>Guided with the provided rubric.</p> <p><b>Activity 2:</b></p> <p>Answers may vary.</p>
---

## References

- AiMark. 2019. "Hair-Raising Medley By The Cast Of Himala, Isang Musikal". *Youtube.Com*. <https://www.youtube.com/watch?v=loARV5IURVE>. (accessed December 7, 2020)
- Moonfall. *Youtube*. November 21, 2012. <https://m.youtube.com/watch?v=Z-tM8J86xtw> (accessed December 7, 2020).
- Morato, Pearl Ann. *Workbook in English III*. Quezon City: St. Bernadette Publications, Inc., n.d.
- Odoemene, Michael Melvin. *Youtube*. March 9, 2006. <https://www.youtube.com/watch?v=gTFMY9yKdSA> (accessed December 6, 2020).
- Raul M. Sunico, PhD., Evelyn F. Cabanban, Melissa Y Moran. *Horizons Music and Arts Appreciation for Young Filipinos*. Tawid Publications, 2015.
- Silva, Sandy de. *Youtube*. n.d. <https://www.youtube.com/watch?v=fdqyVRGrH00> (accessed December 7, 2020).
- The Drama Teacher*. n.d. <https://thedramateacher.com/elements-of-drama-rhythm/> (accessed December 7, 2020).
- Theatres, Sight and Sound. *Youtube*. June 22, 2009. <https://www.youtube.com/watch?v=ub04xcEKwCY> (accessed December 7, 2020).
- Tickets, ATG. *Youtube*. August 15, 2012. <https://www.youtube.com/watch?v=12NdwEQhNBk> (accessed December 5, 2020).
- Vilma V. Perez, Lilian N. Luna, Crisanto E. Tomas. *MAPEH III*. Quezon City: St. Bernadette Publishing House Corporation, n.d.
- WhatsHappeningPH. *Youtube*. December 16, 2016. <https://www.youtube.com/watch?v=XGgUgxck8UU> (accessed December 5, 2020).
- Youtube*. n.d. <https://www.youtube.com/watch?v=5bFkM2svol8> (accessed December 7, 2020).
- Youtube*. n.d. <https://www.youtube.com/watch?v=cwB3Zxh2gSE> (accessed December 8, 2020).
- Youtube*. n.d. <https://www.youtube.com/watch?v=loARV5IURVE> (accessed December 8, 2020).
- Youtube*. n.d. <https://www.youtube.com/watch?v=mG0OptDrchE> (accessed December 6, 2020).

**For inquiries or feedback, please write or call:**

Department of Education - Bureau of Learning Resources (DepEd-BLR)

Ground Floor, Bonifacio Bldg., DepEd Complex  
Meralco Avenue, Pasig City, Philippines 1600

Telefax: (632) 8634-1072; 8634-1054; 8631-4985

Email Address: [blr.lrqad@deped.gov.ph](mailto:blr.lrqad@deped.gov.ph) \* [blr.lrpd@deped.gov.ph](mailto:blr.lrpd@deped.gov.ph)