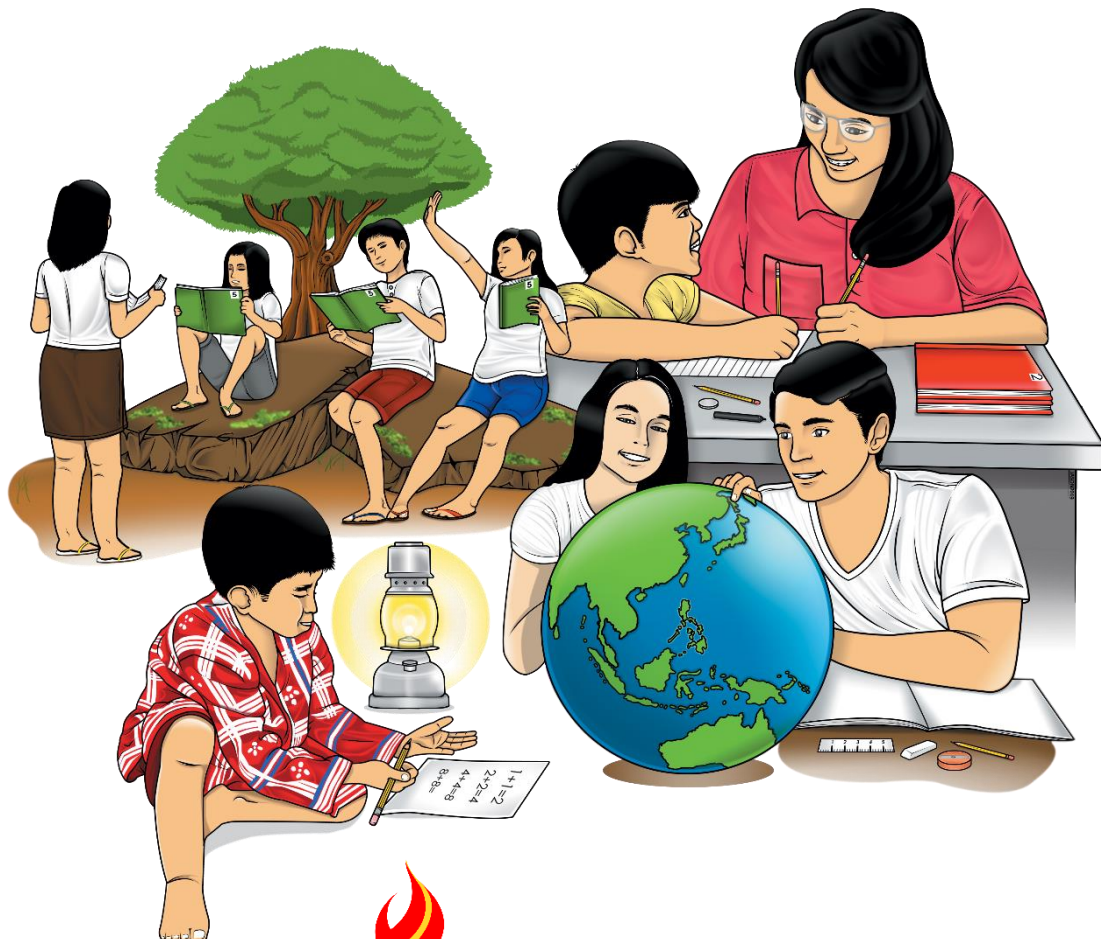


Arts

Quarter 3 – Module 3: Techniques and Styles of Neoclassic and Romantic Art and its Influence to Philippine Art Forms



Arts – Grade 9

Alternative Delivery Mode

Quarter 3 – Module 3: Techniques and Styles of Neoclassic and Romantic Art and its Influence to Philippine Art Forms

First Edition, 2020

Republic Act 8293, section 176 states that: No copyright shall subsist in any work of the Government of the Philippines. However, prior approval of the government agency or office wherein the work is created shall be necessary for exploitation of such work for profit. Such agency or office may, among other things, impose as a condition the payment of royalties.

Borrowed materials (i.e., songs, stories, poems, pictures, photos, brand names, trademarks, etc.) included in this module are owned by their respective copyright holders. Every effort has been exerted to locate and seek permission to use these materials from their respective copyright owners. The publisher and authors do not represent nor claim ownership over them.

Published by the Department of Education
Secretary: Leonor Magtolis Briones
Undersecretary: Diosdado M. San Antonio

Development Team of the Module

Authors: Noime Jane G. Langanlangan, Grace A. Austria
Content Editor: Nanette Kay D. Mercado
Layout Artist: Gianna Norma Stefani D. Mercado, Ma. Jayvee A. Garapan
Management Team: Arturo B. Bayocot
Mala Epra B. Magnaong
Marie Emerald A. Cabigas
Bienvenido U. Tagolimot, Jr.
Henry B. Abueva
Rustico Y. Jerusalem
Virginia N. Nadayag

Printed in the Philippines by _____

Department of Education – Region X

Office Address : Masterson Avenue, Upper Balulang, Zone 1, Cagayan de Oro City

Telephone : (088)-856-3932

E-mail Address: : region10@deped.gov.ph

Arts

**Quarter 3 – Module 2:
Techniques and Styles of Neoclassic
and Romantic Art and its Influence
to Philippine Art Forms**

Introductory Message

This Self-Learning Module (SLM) is prepared so that you, our dear learners, can continue your studies and learn while at home. Activities, questions, directions, exercises, and discussions are carefully stated for you to understand each lesson.

Each SLM is composed of different parts. Each part shall guide you step-by-step as you discover and understand the lesson prepared for you.

Pre-tests are provided to measure your prior knowledge on lessons in each SLM. This will tell you if you need to proceed on completing this module or if you need to ask your facilitator or your teacher's assistance for better understanding of the lesson. At the end of each module, you need to answer the post-test to self-check your learning. Answer keys are provided for each activity and test. We trust that you will be honest in using these.

In addition to the material in the main text, Notes to the Teacher are also provided to our facilitators and parents for strategies and reminders on how they can best help you on your home-based learning.

Please use this module with care. Do not put unnecessary marks on any part of this SLM. Use a separate sheet of paper in answering the exercises and tests. And read the instructions carefully before performing each task.

If you have any questions in using this SLM or any difficulty in answering the tasks in this module, do not hesitate to consult your teacher or facilitator.

Thank you.

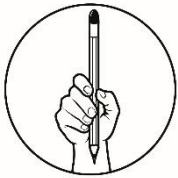


What I Need to Know

OBJECTIVES

At the end of this module, the learners are expected to:

- create artworks guided by techniques and styles of Neoclassic and Romantic art traditions.;
- applies different media techniques and processes to communicate ideas, experiences, and stories showing the characteristics of Neoclassic and Romantic periods.;
- evaluates works of art in terms of artistic concepts and ideas using criteria from Neoclassic and Romantic periods.; and
- participates in an exhibit using completed artworks with Neoclassic and Romantic periods characteristics.



What I Know

I. MULTIPLE CHOICE

Directions: Write the letter of your answers in your exercise notebook.

- ____ 1. The word neoclassic came from the Greek neos meaning new and the Latin word classicus which means _____?
A. Light B. Old C. First class D. Bright
- ____ 2. The Neoclassical movement coincided with the 18th century **Age of Reason** also known as the _____?
A. Age of Enlightenment C. Age of Bold Styles
B. Age of Development D. Age of Classics
- ____ 3. Neoclassical art pieces such as paintings, sculpture and architecture generally portrayed _____?
A. Greek history C. Philippine history
B. Roman History D. Italian history
- ____ 4. These are the characteristics of a neoclassical art EXCEPT
A. Local color C. Classic geo-structure
B. Overall lighting D. Emotional extremes
- ____ 5. This style of Romantic painting became more popular due to the peoples' romantic adoration of nature.
A. Landscape painting C. Portrait painting
B. Formal painting D. Emotional painting

II. MATCHING TYPE

Direction: Match the following art medium/art techniques in column A with their corresponding meaning in column B. Write the letter of the correct answers in your exercise notebook.

Column A

- _____ 1. Oil paint
- _____ 2. Watercolor
- _____ 3. Acrylic paint
- _____ 4. Engraving
- _____ 5. Sculpting

Column B

- A. It is a fast-drying paint made of pigment suspended in acrylic polymer emulsion.
- B. The process or art of cutting or carving a design on a hard surface, especially so as to make a print.
- C. It is a type of slow-drying paint that consists of particles of pigment suspended in a drying oil, commonly linseed oil.
- D. A painting material which uses water as dispersion of the binding material (such as glue, casein, or gum).
- E. creating a three-dimensional artwork by means of carving, casting, or other shaping techniques.

Lesson

1

Elements and Principles of Arts in Neoclassical and Romantic Periods



What's In

Classify the given words inside the box whether they belong to Neoclassical period or the Romantic period. Write your answers in your exercise notebook.

Reason

Values myth, legend, and folk culture

Individual freedom

Constraint

Tradition

Power of the imagination

NEOCLASSIC PERIOD

1. _____

2. _____

3. _____

4. _____

5. _____

ROMANTIC PERIOD

1. _____

2. _____

3. _____

4. _____

5. _____



What's New

ACTIVITY 1: "Label Me!"

IDENTIFICATION: Considering the techniques and styles used in the following movement, write **RP** if the artwork belongs to the Romantic Period and **NP** if it belongs to the Neoclassic Period. Write your answer in your exercise notebook.



<https://www.flickr.com/photos/chilangoco/7856522628>

PSYCHE AWAKENED BY CUPID'S KISS (A. Canova)

ANSWER:



<https://www.flickr.com/photos/69184488@N06/11891328224>

DEPARTURE OF THE VOLUNTEERS (F. Rude)

ANSWER:



<https://www.flickr.com/photos/internetarchivebookimages/14589711690/>

THESEUS SLAYING MINOTAUR (A. Barye)

ANSWER:



<https://www.flickr.com/photos/graeme/8532843567>

OATH OF THE HORATII (J. David)

ANSWER:



https://www.flickr.com/photos/carles_tomas/2694479035

CHARGING CHASSEUR (T. Géricault)

ANSWER:



<https://www.flickr.com/photos/graeme/8532843567>

NAPOLEON CROSSING THE ALPS (J. David)

ANSWER:

:



<https://www.flickr.com/photos/nat507/27210599170>

SATURN DEVOURING HIS SON (F. Goya)

ANSWER:



<https://www.flickr.com/photos/archer10/16237617902>

THE RAFT OF THE MEDUSA (T. Géricault)

ANSWER:



What is It

Neoclassical and Romantic styles are very different from each other. This was introduced to you on the previous modules. This is a summary of the qualities particularly techniques and styles of art from Neoclassicism and Romanticism.

ELEMENTS	NEOCLASSICISM	ROMANTICISM
Values:	Order, solemnity	Intuition, emotion, imagination
Inspiration:	Classical Rome, patriotism, courage, honor	Medieval and Baroque eras, Middle and Far East
Tone:	Calm, rational	Subjective, spontaneous, non-conformist
Subjects:	Greek and Roman history	Legends, exotica, nature, violence
Technique:	Stressed drawing with lines, not color; no trace of brushstroke	Unrestrained, rich color; visible brushstrokes
Role of art:	Morally uplifting, inspirational	Dramatic, carry viewer away
Composition:	Most figures in foreground.	Use of diagonal, crowded compositions
Lines:	Linear style (outlines are sharply defined through controlled brushstrokes)	Painterly style (brushstrokes are less restrained)
Texture:	Smooth, no brushstrokes can be seen	Often has visible brushstrokes

NEOCLASSICISM versus ROMANTICISM	
Neoclassicism: REASON	Romanticism: PASSION
Nature is defined as human nature	Nature is defined as natural environment (woods, mountains, etc)
Society is more important than the individual	The individual is more important than society
Imitation	Originality
Tradition	Experimentation
Rules and order	Freedom
Mechanical form (imposed from outside)	Organic form (growing from inside)
Logic	Intuition
Reason	Imagination, Emotion
Attempted objectivity	Accepted subjectivity
Town or cultivated landscape	Country, preferably untouched nature
Constraint	Spontaneity
Conformity	Independence, Rebellion
Cultivated, formal, social	The primitive becomes focus

NEOCLASSICAL SCULPTURE versus ROMANTIC SCULPTURE	
Neoclassical	Romantic
Mythological Characters	Human world
Religious Characters	Natural world
Portraying discrete sexual pleasures	Dynamic and emotional
Nude flesh	Animal themes

NEOCLASSICAL ARCHITECTURE

Neoclassical architectural styles started in the mid-18th century. It turned away from the grandeur of *Rococo* style and the Late Baroque. In its purest form, Neoclassical architecture was a style principally derived from the architecture of Classical Greece and Rome and the architectural designs of the Italian architect **Andrea Palladio**.

Types of Neoclassical Architecture: Temple Style

Temple style building design was based on an ancient temple. These buildings were uncommon during the Renaissance as architects of that period focused mainly on applying classical elements to churches and modern buildings like palazzos and villas.

Palladian Style

Palladian buildings were based on Andrea Palladio's style of villa construction. Some of the buildings feature a *balustrade* which is a railing with vertical supports along the edge of the roof. There are vertical supports within a balustrade known as "balusters" or spindles". It is also a classical method of crowning a building that has a flat or low lying roof.

Classical Block Style

The building features a rectangular or square plan, with a flat roof and an exterior rich in classical detail. The exterior features a repeated classical pattern or series of arches and/or columns. The overall impression of such a building was a huge, classically-decorated rectangular block.



What's More

ACTIVITY 4: "Carving from the Past"

Create your own sculpture, either human, mythological, or animal figures.

Material: Choose your material as to your preference such as modeling clay, soap, piece of wood, rock, wire or any usable and pliable medium.

Sculpture is an art form showing the three-dimensional representation of an image. It is free standing and can be seen from different angles. There are two sculptural processes, namely additive and subtractive.

Additive method is when materials are put up together to form the image. This method is done through modelling, constructing, and assembling to build the form.



<https://www.flickr.com/photos/teitelbaum/4594424568>



<https://www.flickr.com/photos/melanie-gail/6917959265/>

Subtractive method is when a solid block or mass of material is cut, chiseled, chipped or scraped away to reveal the remaining form.



Wooden sculpture of horse stock image. Image of aggressive - 19419029 (dreamstime.com)



<https://www.flickr.com/photos/scul210/4581037989/>

Procedures:

1. Use knife or cutter in carving-out your art piece.
2. Design should reflect the style of the Neo-classic and Romantic period.
3. You may also use patterns that shows your regional identity.
4. Exhibit/Display your masterpiece.

RUBRICS

CRITERIA	5	4	3	2
QUALITY OF ARTWORK	All instructions were followed correctly	1-2 instructions were not followed correctly	3-4 instructions were not followed correctly	Most of the instructions were not followed correctly
VISUAL IMPACT	Artwork has shown a Neo-classical/Romantic style/technique	Artwork has somehow shown a Neo-classical/Romantic style/technique	Artwork-has rarely shown a Neo-classical/Romantic style/technique	Artwork has not shown a Neo-classical/Romantic style/technique
PUNCTUALITY	Artwork was submitted on time	Artwork was submitted 1 day late	Artwork was submitted 2 days late	Artwork was submitted 3 days late
NEATNESS	Artwork presentation was neat and orderly	Artwork presentation was mostly neat and orderly	Artwork presentation was somehow neat and orderly	Artwork presentation was disorderly

DESCRIPTIVE RATING	SCORE/POINTS
Excellent	18-20
Very Good	15-17
Good	11-13
Fair	9-10
Poor	8

Reflection Questions:

1. What sculpting technique did you use to show the style of the Neoclassicism/Romanticism?
2. Why do you think the subject in your work is reflective of Neoclassicism/Romanticism style?
3. How did you apply the elements of arts to show the distinct technique of the Neoclassicism/Romanticism art style?



What I Have Learned

Activity: “Exhibit”

Paint or sketch a work of art that characterizes Neoclassicism or Romanticism which conveys safety against the pandemic Covid19. Give a title and a short portrayal about your work. Find a space in your house where you can display/exhibit your artwork. Choose 3 members of the family to assess your work using the rubrics below.

Materials:

- ¼ white cartolina
- Painting/colouring materials

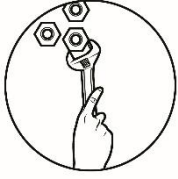
Reflections:

1. What did you feel as you were making your perfect work of art?
2. Does your work of art pass on the techniques and styles of Neoclassicism or Romanticism?

RUBRICS

CRITERIA	5	3	1
NATURE OF ARTWORK	All instructions were followed correctly.	Some instructions were not followed correctly.	Most of the instructions were not followed.
VISUAL EFFECT	Artwork shows the idea of the presented period.	Artwork somehow shows the idea of the presented period.	Artwork did not show the idea of the presented period.
TIDINESS	Artwork was clean and orderly.	Artwork was somehow clean and orderly.	Artwork was disorderly.
TIMELINESS	Artwork was given on time.	Artwork was given 1 day late.	Artwork was given 2 days late.

Descriptive Rating	Score/Points
Excellent	18 – 20
Very Good	15 – 17
Good	11 – 13
Satisfactory	9 – 10
Needs Improvement	8 and below

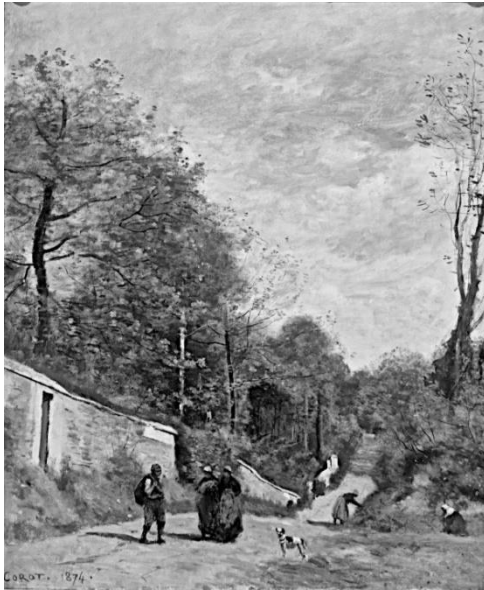


What I Can Do

Evaluate the techniques and styles of the artworks below. How did the Neo-classical and Romantic art styles and techniques influence these two works in the pre-impressionism and post-impressionism eras?

A ROAD AT A VILLE (1874)

by *Jean-Baptiste-Camille Corot*



<https://www.flickr.com/photos/pedrosimoes7/28222916085>

VALUES	
INSPIRATION	
TONE	
SUBJECTS	
TECHNIQUE	
ROLE OF ART	
COMPOSITION	
LINES	
TEXTURE	

STARRY NIGHT (1889)

by *Van Gogh*



https://en.wikipedia.org/wiki/The_Starry_Night#/media/File:Van_Gogh_-_Starry_Night_-_Google_Art_Project.jpg

VALUES	
INSPIRATION	
TONE	
SUBJECTS	
TECHNIQUE	
ROLE OF ART	
COMPOSITION	
LINES	
TEXTURE	

Lesson

2

The Influence of Neoclassic and Romantic Artists to Philippine Art Forms



What I Need to Know

OBJECTIVES

At the end of this module, the learners are expected to:

- Describe the influence of iconic artists belonging to the Neoclassic and Romantic periods.
- Shows the influence of Neoclassic and Romantic periods on Philippine art forms.



What's In

The Neoclassical period was one of the great ages of public sculpture. Artists looked to Roman styles during the time of **Alexander the Great** for inspiration and mimic their style. The paintings of the Romantic period gave more emphasis on emotion. Artists expressed as much feeling and passion as they could on canvas.

Can you still remember these Neoclassic and Romantic artists?

In your activity notebook match the following artists in column A with their corresponding artworks in column B. Write the letter of the correct answer.

Column A

- _____ 1. Delacroix
_____ 2. Barye
_____ 3. Gericault
_____ 4. Goya
_____ 5. David

Column B

- A. Charging Chasseur
B. The Burial of Sardine
C. Liberty Leading the People
D. Theseus Slaying Minotaur
E. Napoleon Crossing the Alps



What is It

NEOCLASSICISM and ROMANTICISM in the Philippines

In the Philippines, Neoclassic and Romantic arts influenced a lot of our artists. The realism employed in the styles and techniques of the works of Jacques-Louis David, Jean-Auguste-Dominique Ingres, Jean Louis Théodore Géricault, Eugène Delacroix, Francisco Goya shows in their paintings, sculptures, and architecture.

FAMOUS PHILIPPINE ARTWORKS:



[https://commons.wikimedia.org/wiki/File:Las_Virgenes_Cristianas_Expuestas_Al_Populacho_\(The_Christian_Virgins_Being_Exposed_to_the_Populace\)_by_Felix_Ressurreccion_Hidalgo_1884.jpg](https://commons.wikimedia.org/wiki/File:Las_Virgenes_Cristianas_Expuestas_Al_Populacho_(The_Christian_Virgins_Being_Exposed_to_the_Populace)_by_Felix_Ressurreccion_Hidalgo_1884.jpg)

THE CHRISTIAN VIRGINS BEING EXPOSED TO THE POPULACE (FELIX HIDALGO)



https://commons.wikimedia.org/wiki/File:Juan_Luna_Spoliarium.jpg

SPOLIARIUM (JUAN LUNA)



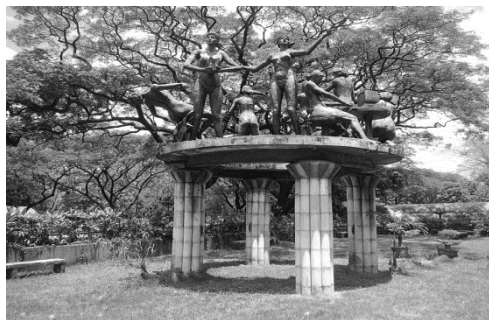
https://commons.wikimedia.org/wiki/File:UP_Baguio_Oblation.jpg

OBLATION (GUILLERMO TOLENTINO)



[https://commons.wikimedia.org/wiki/File:Pambansang_Bantayog_ni_Andres_Bonifacio_\(Bonifacio_National_Monument\).jpg](https://commons.wikimedia.org/wiki/File:Pambansang_Bantayog_ni_Andres_Bonifacio_(Bonifacio_National_Monument).jpg)

PAMBANSANG BANTAYOG NI ANDRES BONIFACIO (GUILLERMO TOLENTINO)



https://commons.wikimedia.org/wiki/File:UP_CALif3065_10.JPG

SIYAM NA DIWATA NG SINIG

(NAPOLEON ABUEVA)



What's More

ACTIVITY 1: "Say Something about the Styles"



<https://www.pinterest.ph/pin/304204149800621177>

LIBERTY LEADING THE PEOPLE
(E. Delacroix)



<https://www.flickr.com/photos/nat507/27452992236>

THE THIRD OF MAY (F. Goya)

Reflection Questions:

Write your answers in your exercise notebook.

1. What can you say about the artwork's styles of the Neoclassic and Romantic Period?
2. What specific style was portrayed in each work of art?
3. How did the artists convey their styles in their art?

Activity 2: "Neoclassicism Technique in a Philippine Painting"

NEOCLASSICAL PAINTING



<https://www.flickr.com/photos/archer10/16237617902>

THE RAFT OF THE MEDUSA (T. Géricault)

PHILIPPINE PAINTING



PLANTING RICE WITH MAYON VOLCANO (F. Amorsolo)

METROPOLITAN MUSEUM OF MANILA

Reflection Questions:

Write your answers in your exercise notebook.

1. What can you say about Neoclassical and Philippine paintings?
2. Compare each artwork according to their respective techniques and styles.

Activity 3: “Romanticism Technique in a Philippine Sculpture”

ROMANTIC SCULPTURE



<https://www.flickr.com/photos/69184488@N06/11891328224>

DEPARTURE OF THE VOLUNTEERS
(F. Rude)

PHILIPPINE SCULPTURE



<https://www.flickr.com/photos/andryn2006/308544959>

OBLATION (University of the Philippines)
(G. Tolentino)

Reflection Questions:

1. Which work shows a Romanticism technique? Why?
2. How did the Romanticism technique influenced Philippine sculptures?
3. Give other examples of sculptures with influences of the sculptural techniques of Romanticism art in our country.



What I Have Learned

“Artists’ Techniques and Styles”

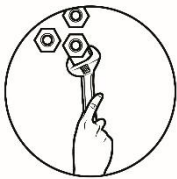
Write the technique or style of art of each artist.

ARTIST	TECHNIQUE	STYLE
Neoclassic Artists		
Jacques-Louis David		
Antonio Canova		
Bertel Thorvaldsen		
Romantic Artists		
Francisco Goya		
Jean-Baptiste-Camille Corot		
François Rude		

Philippine Artists		
Guillermo Tolentino		
Felix Hidalgo		
Napoleon Abueva		
Juan Luna		

Reflection Questions:

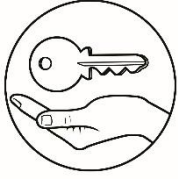
1. Among the artists listed in the table, who would be your best choice? And why?
2. If you would be an artist, what would be the theme of your artworks? And why?



What I Can Do

PERFORMANCE TASK: “Timely Challenge”

Neoclassic and Romantic artists influenced other artists. Now, it is your turn to create an artwork for the victims of covid-19. The content should display positivity, hope and encouragement to continue fighting for this pandemic. Apply the techniques and styles of Neoclassic and Romantic art conventions that you have gained from this lesson.



Answer Key

LESSON 1

WHAT I KNOW

I. MULTIPLE CHOICE

<p>1. C</p> <p>2. A</p> <p>3. B</p> <p>4. D</p> <p>5. A</p>	<p>1. C</p> <p>2. D</p> <p>3. A</p> <p>4. B</p> <p>5. E</p>
---	---

II. MATCHING TYPE

WHAT'S IN

<p style="text-align: center;">NEOCLASSIC PERIOD</p> <p>Reason</p> <p>Tradition</p> <p>Rules and order</p> <p>Constraint</p> <p>Logic</p>	<p style="text-align: center;">ROMANTIC PERIOD</p> <p>Individual freedom</p> <p>Lessons of the past</p> <p>Values myth, legend, and folk culture</p> <p>Power of the imagination</p> <p>Feelings over intuition</p>
--	--

WHAT'S NEW

“LABEL ME!”

<p>Answer: RP</p> <p>Answer: NP</p> <p>Answer: RP</p> <p>Answer: NP</p> <p>Answer: RP</p>	<p>Answer: NP</p> <p>Answer: RP</p> <p>Answer: NP</p> <p>Answer: RP</p> <p>Answer: NP</p>
---	---

LESSON 2

WHAT'S IN

<p>1. C</p> <p>2. D</p> <p>3. A</p> <p>4. B</p> <p>5. E</p>	
---	--

References

A. Books:

Music and Arts Grade 9 Learner's Material

B. Websites: For Pictures

<https://www.flickr.com/photos/chilangoco/7856522628>

<https://www.flickr.com/photos/69184488@N06/11891328224>

<https://www.flickr.com/photos/internetarchivebookimages/14589711690/>

<https://www.flickr.com/photos/graeme/8532843567>

https://www.flickr.com/photos/carles_tomas/2694479035

<https://www.flickr.com/photos/graeme/8532843567>

<https://www.flickr.com/photos/archer10/16237617902>

<https://www.flickr.com/photos/158004304@N05/46580611142>

[https://commons.wikimedia.org/wiki/File:Las_Virgenes_Cristianas_Expuestas_Al_Populacho_\(The_Christian_Virgins_Being_Exposed_to_the_Populace\)_by_Felix_Ressureccion_Hidalgo_1884.jpg](https://commons.wikimedia.org/wiki/File:Las_Virgenes_Cristianas_Expuestas_Al_Populacho_(The_Christian_Virgins_Being_Exposed_to_the_Populace)_by_Felix_Ressureccion_Hidalgo_1884.jpg)

https://commons.wikimedia.org/wiki/File:Juan_Luna_Spoliarium.jpg

https://commons.wikimedia.org/wiki/File:UP_Baguio_Oblation.jpg

[https://commons.wikimedia.org/wiki/File:Pambansang_Bantayog_ni_Andres_Bonifacio_\(Bonifacio_National_Monument\).jpg](https://commons.wikimedia.org/wiki/File:Pambansang_Bantayog_ni_Andres_Bonifacio_(Bonifacio_National_Monument).jpg)

https://commons.wikimedia.org/wiki/File:UP_CALjf3065_10.JPG

<https://www.pinterest.ph/pin/304204149800621177/>

<https://www.flickr.com/photos/nat507/27452992236>

<https://www.flickr.com/photos/69184488@N06/11891328224>

<https://www.flickr.com/photos/andryn2006/30854495933>

<https://www.flickr.com/photos/nat507/27452992236>

<https://www.flickr.com/photos/melanie-gail/6917959265/>

<https://www.flickr.com/photos/teitelbaum/4594424568>

<https://www.flickr.com/photos/scul210/4581037989/>

Wooden sculpture of horse stock image. Image of aggressive - 19419029 (dreamstime.com), <https://www.dreamstime.com/royalty-free-stock-images-wooden-sculpture-horse-image19419029>

For inquiries or feedback, please write or call:

Department of Education - Bureau of Learning Resources (DepEd-BLR)

Ground Floor, Bonifacio Bldg., DepEd Complex
Meralco Avenue, Pasig City, Philippines 1600

Telefax: (632) 8634-1072; 8634-1054; 8631-4985

Email Address: blr.lrqad@deped.gov.ph * blr.lrpd@deped.gov.ph