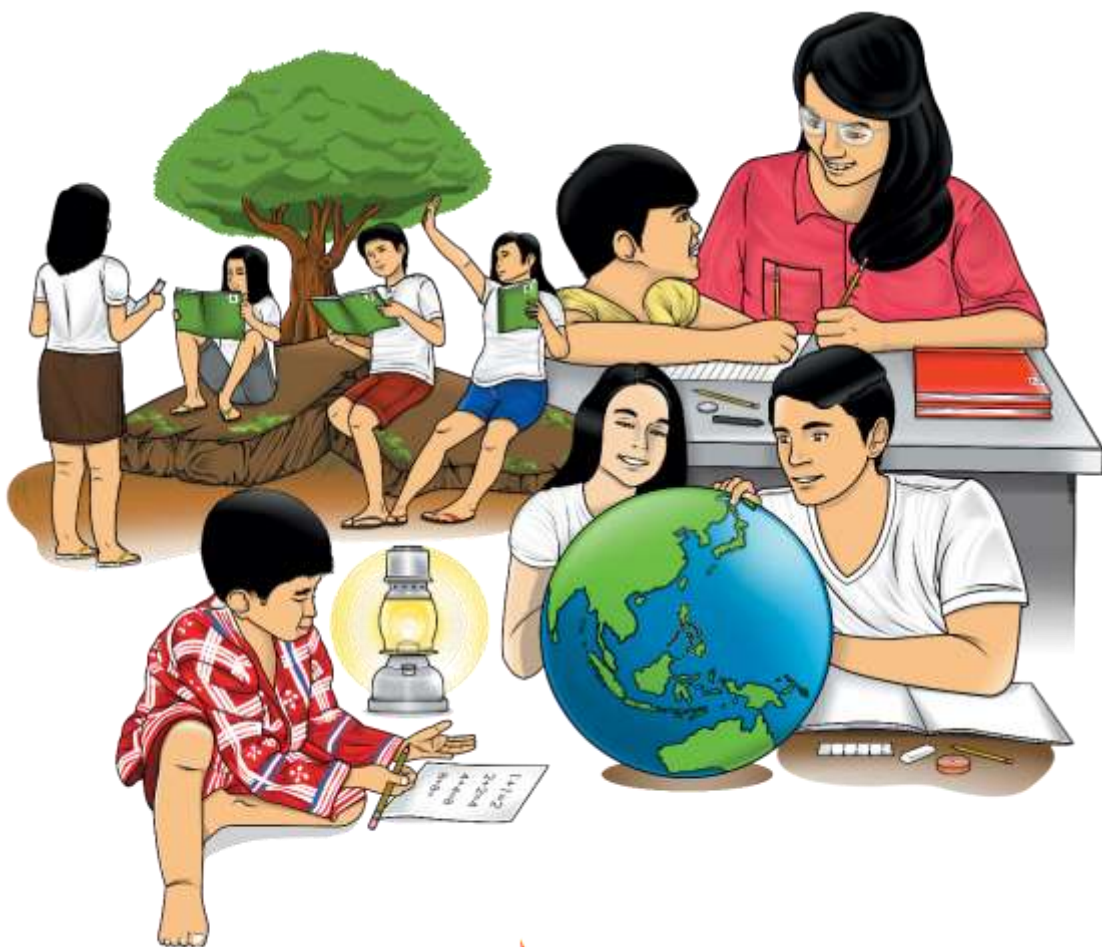


English

Quarter 2 – Module 7: Linear and Non-Linear Texts



CO_Q2_English7_Module7



GOVERNMENT PROPERTY
NOT FOR SALE

English – Grade 7
Alternative Delivery Mode
Quarter 2 – Module 7: Linear and Non-Linear Texts
First Edition, 2020

Republic Act 8293, section 176 states that: No copyright shall subsist in any work of the Government of the Philippines. However, prior approval of the government agency or office wherein the work is created shall be necessary for exploitation of such work for profit. Such agency or office may, among other things, impose as a condition the payment of royalties.

Borrowed materials (i.e., songs, stories, poems, pictures, photos, brand names, trademarks, etc.) included in this module are owned by their respective copyright holders. Every effort has been exerted to locate and seek permission to use these materials from their respective copyright owners. The publisher and authors do not represent nor claim ownership over them.

Published by the Department of Education
Secretary: Leonor Magtolis Briones
Undersecretary: Diosdado M. San Antonio

Development Team of the Module

Writers: Cheryl D. Valencia, Iza Icely S. Palencia

Editors: Chona L. Bernabe

Reviewers: Evelyn C. Frusa, Delia B. Mabalot, Rolex H. Lotilla, Arvin Tejada

Illustrator:

Layout Artist: Den Fernandez, Raiza M. Salvaloya, Ivan Paul V. Damalerio

Management Team: Allan G. Farnazo

Fiel Y. Almendra

Gilbert B. Barrera

Arturo D. Tingson Jr.

Peter Van C. Ang-ug

Belen L. Fajemolin

Evelyn C. Frusa

Bernardita M. Villano

Printed in the Philippines by Department of Education – SOCCSKSARGEN Region

Office Address: Regional Center, Brgy. Carpenter Hill, City of Koronadal
Telefax: (083) 2288825/ (083) 2281893
E-mail Address: region12@deped.gov.ph

Introductory Message

This Self-Learning Module (SLM) is prepared so that you, our dear learners, can continue your studies and learn while at home. Activities, questions, directions, exercises, and discussions are carefully stated for you to understand each lesson.

Each SLM is composed of different parts. Each part shall guide you step-by-step as you discover and understand the lesson prepared for you.

Pre-tests are provided to measure your prior knowledge on lessons in each SLM. This will tell you if you need to proceed on completing this module or if you need to ask your facilitator or your teacher's assistance for better understanding of the lesson. At the end of each module, you need to answer the post-test to self-check your learning. Answer keys are provided for each activity and test. We trust that you will be honest in using these.

In addition to the material in the main text, Notes to the Teacher are also provided to our facilitators and parents for strategies and reminders on how they can best help you on your home-based learning.

Please use this module with care. Do not put unnecessary marks on any part of this SLM. Use a separate sheet of paper in answering the exercises and tests. And read the instructions carefully before performing each task.

If you have any questions in using this SLM or any difficulty in answering the tasks in this module, do not hesitate to consult your teacher or facilitator.

Thank you.



What I Need to Know

This module was designed and written with you in mind. It is here to help you master Linear and Non-Linear Texts. The scope of this module permits it to be used in many different learning situations. The language used recognizes the diverse vocabulary level of students. The lessons are arranged to follow the standard sequence of the course. But the order in which you read them can be changed to correspond with the textbook you are now using.

The module is divided into two lessons, namely:

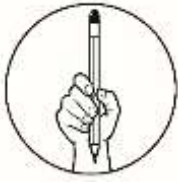
- Lesson 1 – Features of Linear & Non-Linear Texts
- Lesson 2 – Transcoding Information from Linear to Non-Linear Texts and Vice-Versa

Most Essential Learning Competency

Transcode information from linear to non-linear texts and vice-versa.
(EN8RC-IIe-11)

After going through this module, you are expected to:

1. identify linear and non-linear texts;
2. differentiate linear text from non-linear text;
3. interpret data in non-linear texts;
4. draw data from linear and non-linear texts; and
5. transcode information from linear to non-linear texts and vice-versa.



What I Know

The words that you can form from the scrambled letters are related to the lesson that you are about to learn. So, try to arrange these scrambled letters to form meaningful words.

1. NAERLI _____
2. ONN EALNIR _____
3. EXTTS _____
4. LERTETS _____
5. TICARLES _____
6. BLESTA _____
7. SMAP _____
8. CHRTSA _____
9. PHGRAS _____
10. NOLVES _____

Lesson

1

Linear & Non-Linear Texts

Information comes in various forms and it can be transmitted not only through linear presentation, meaningful sentences and paragraphs, but also through the use of graphs, tables and charts. And since learners have their own preferences of understanding and presenting ideas and information better, it is relevant to discuss the salient features of linear and non-linear texts.

As you go through this lesson, you will learn the importance of using linear and non-linear texts in presenting and conveying information.



What's In

Previously, you had learned and answered varied activities in word analogies. The process of letting you analyze the word relationships leads you to associate details and establish relationship among them. To challenge you more, think of ways on how the ten (10) words above are related to each other.

Notes to the Teacher

Students' answers may vary, so consider related responses.



What's New

Below are exercises that will lead you to discover concepts about the lesson.

Activity 1. Classifying as Linear or Non-Linear Text

Tell whether each statement refers to linear or non-linear text. Tick the column of your choice.

Linear or Non-Linear?	LT	NLT
1. They are the interpretation of data from graphs, tables and charts converted into words.		
2. It refers to text that does not need to be read from beginning to end.		
3. It includes printed texts.		
4. There is only one reading path which is decided by the author.		
5. It includes, flowcharts, knowledge maps, encyclopedias.		
6. These are traditional texts that need to be read from beginning to end.		
7. There are multiple reading paths which are determined by the reader.		
8. Novels, poems, letters, textbooks, articles are some of its examples.		
9. It's used to summarize figures, show trends, comparisons, relationships and clarity of difficult concepts.		
10. It allows the readers to find information more efficiently.		

Activity 2.

To give you an initial idea about non-linear text, find specific information from the illustration below then answer the questions that follow.

Try this

Lake Holon (Lake Maughan)



1, 756 meters above sea level
300-hectare wide body of water



The Lake was declared the cleanest inland body of water in the entire country in 2003 and 2004.

How to get there?

- 7 hours from Koronadal City
- 45 min. to T' boli and 1 hour to arrive at Brgy. Salacafe, then 2 to 5 hours of trekking from Salacafe to the mouth of Mt. Parker.



What to see

- Calm and soothing view of the lake
- Varieties of plants, from flower-bearing plants to fruit-bearing trees.

Location

- The lake is at the crater of Mt. Parker in T'boli, Province of South Cotabato.
- The lake is approximately seven kilometers away from Brgy. Salacafe.

Photo Source: www.soxph.com, Detourista.com, sarasallador.blogspot.com, Ph.asiatatler.com

Fill in the blanks with information from the text above.

1. Lake Holon is also known as _____.
2. Lake Holon is situated in _____.
3. Its height is measured at _____.
4. The lake is actually found at the _____ of _____.
5. It will take _____ for the travels to reach the lake.
6. The lake is _____ away from Brgy. Salacafe.



What is It

To better understand the salient points of the lesson, answer the questions below.

1. Based on the statements provided in Activity 1, differentiate linear from non-linear text.
2. In what ways can non-linear texts be used?
3. How do we interpret non-linear texts?

What is Linear Text?

Linear text refers to traditional text that needs to be read from beginning to end. Here, the reader makes sense of the text according to the grammatical and syntactic arrangement of the words. Novels, poems, short stories, letters, educational texts, all those texts we read from the beginning to the end, are linear texts.

Linear text is the most common type of reading. It is the traditional method of reading, the way we are taught as children. However, linear text or linear reading is not always advantageous; it may prove disadvantageous when you are in a hurry and need to find some information quickly. This is because reading a linear text involves reading the whole text from the beginning to the end, and it may take a considerable amount of time to find the specific information you need.

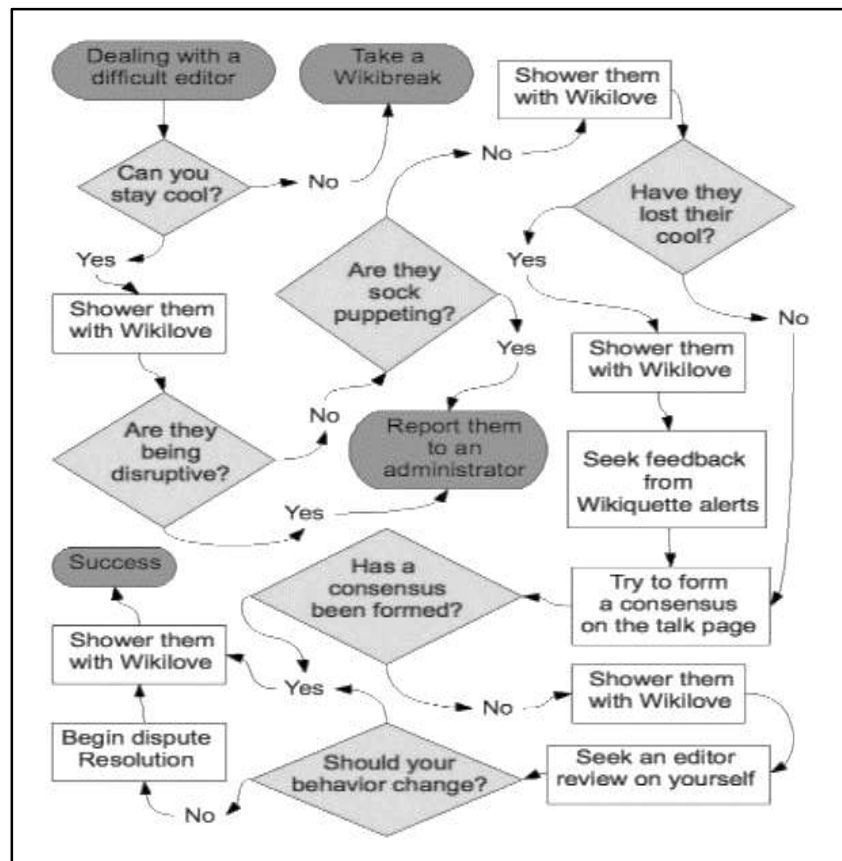
What is Non-linear Text?

Non-linear text is the opposite of linear text. As its name suggests, it is non-sequential. In other words, the readers do not have to go through the text in a sequential manner in order to make sense of the text. This type of text has many reading paths since it's the readers who decide the sequence of reading, not the author of the text.

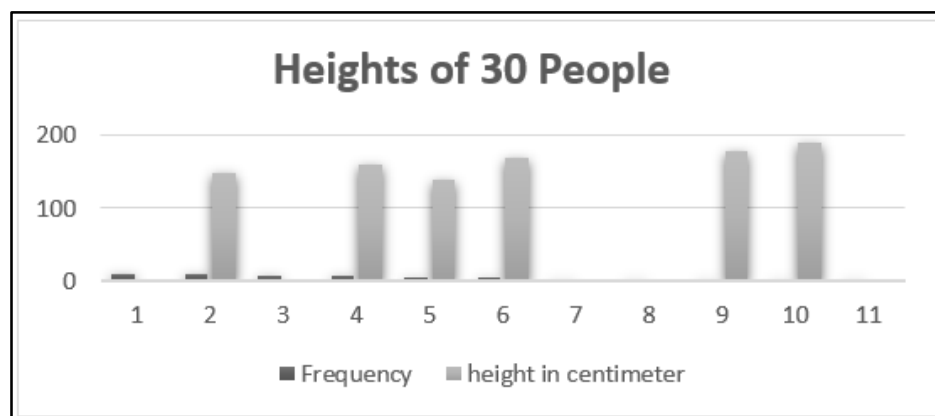
There are many definitions of the term non-linear text. Most people consider texts with visuals or graphs along with them as examples for non-linear texts. Some examples include flowcharts, charts, and graphs (ex: pie chart, bar graphs), graphical organizers such as knowledge maps and story maps.

In fact, any text that is not read from beginning to the end falls into the category of non-linear text. For example, consider an encyclopedia or a telephone directory. We do not read them from beginning to the end; we skim through them to obtain the specific information we need.

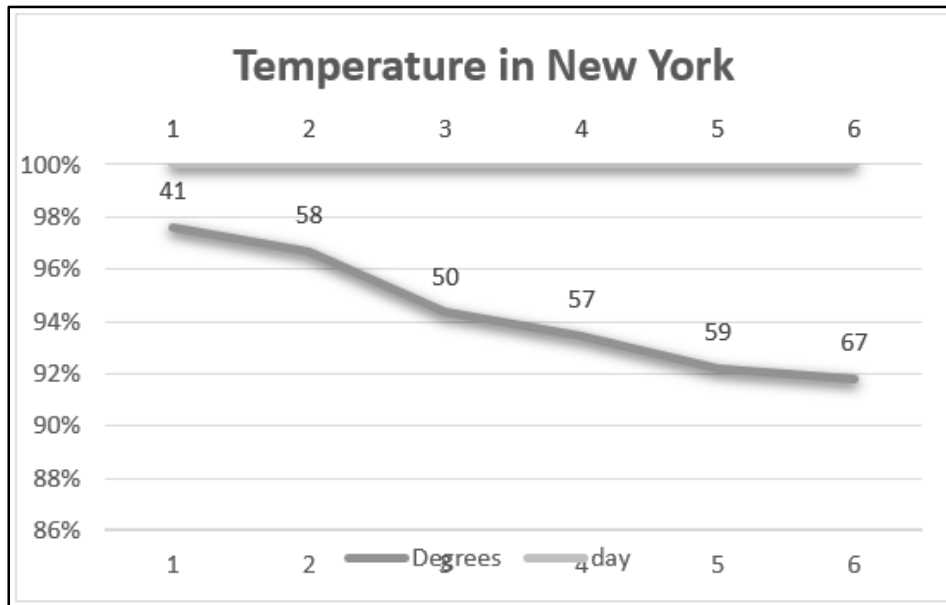
Examples for Non-Linear Texts:



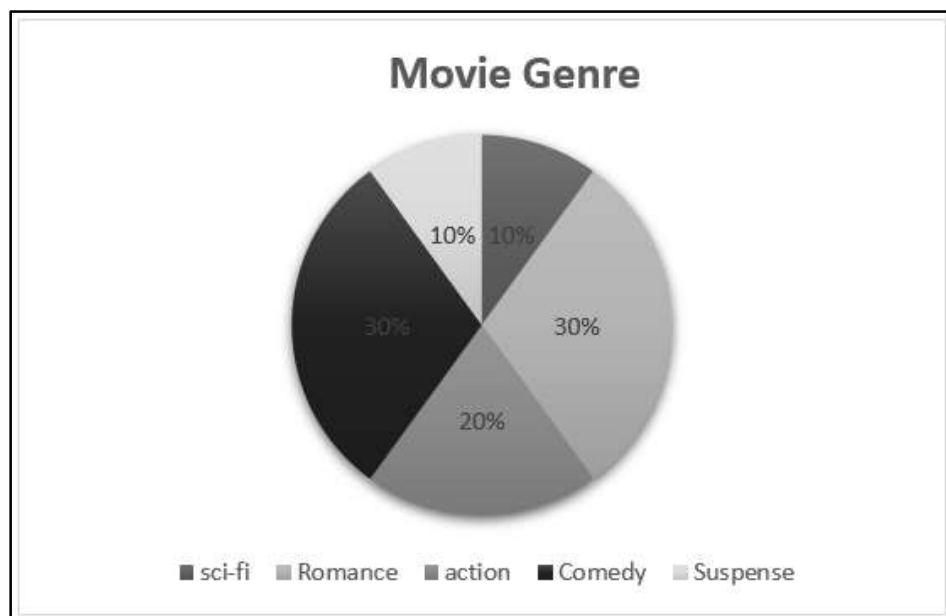
Source: <http://www.differencebetween.com/difference-between-linear-and-nonlinear-text/>



Source: <https://www.chegg.com/homework-help/questions-and-answers/2-histogram-shows-heights-centimeters-distribution-30-people-heights-30-people-10-9-8-7-fr-q55782803?fbclid=IwAR2YutTOHP9bIPKibNdEcCi27ez8rEDhVc4OOEodg9PzzeaYngSnEG8BnpU>



Source: https://www.pinterest.ph/pin/63261569742992815/?autologin=true&fbclid=IwAR2qX78of6Kyj_NZeyEd6D3nZzNCdloXhzN5Dq4QCEs2tY1LzWLbw053DDo

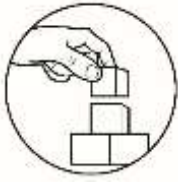


Source: https://brainly.com/question/14506672?fbclid=IwAR2pLGY6BBjnMin57c063qFyWsl031wMHedDY_uVbbiukzwhxMb9DK2OFI

It is also important to note that digital texts or electronic texts are also non-linear texts. These texts offer an array of constituents such as mobile and immobile pictures, hyperlinks, and, sound effects. Here, the reader can choose his own path of reading.

Study this illustration which shows the difference between linear and non-linear texts. Notice how the same information is presented differently as compared to the text on linear and non-linear above.

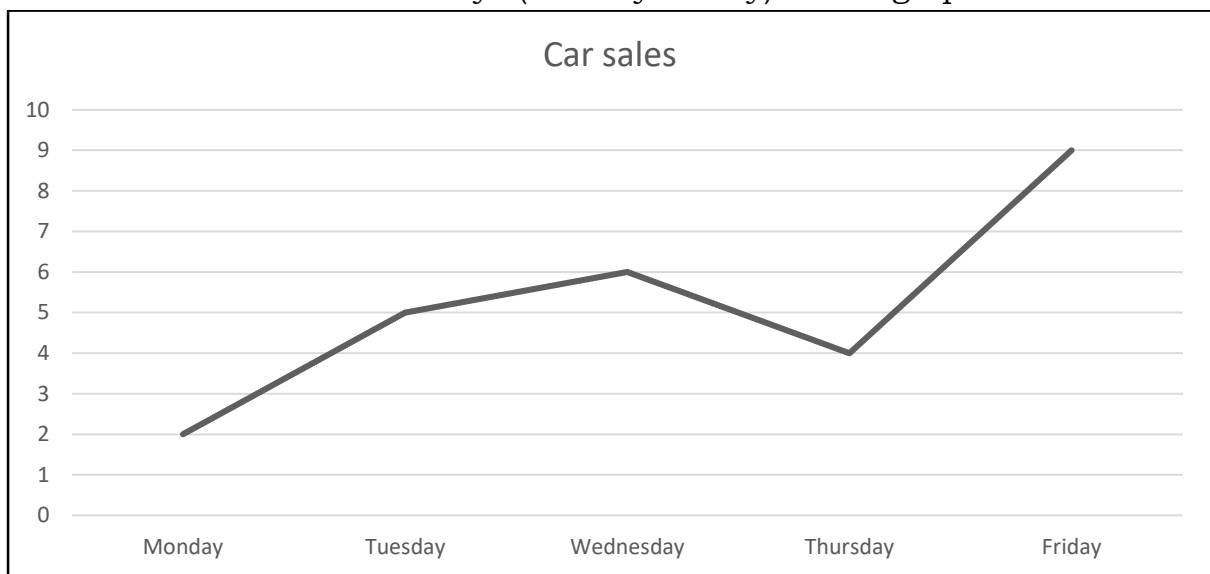
	LINEAR	VS	NON-LINEAR
DEFINITION	Refers to traditional text that needs to be read from beginning to end		Refers to text that does not need to be read from beginning to end
READING PATH	There is only one reading path, which is decided by the author		There are multiple reading paths. they are determined by the reader
CONTENT	Typically includes printed texts		Typically includes digital texts
EFFICIENCY	It may take time to find the information readers are searching for		Allows readers to find information more efficiently
EXAMPLES	Novels, poems, letters, textbooks, newspaper articles		Flowcharts, knowledge maps and encyclopedias



What's More

The concepts learned about linear and non-linear will surely assist you to do the next activity. Study the graph and make your own interpretation about it.

George works as a salesman in an authorized car showroom. He records the number of cars sold in five days (Monday-Friday) in line graph.



Source: <https://www.mathworksheets4kids.com/line-graph/interpret-easy-large.png>

1. How many cars were sold in 5 days?
2. On which day was the maximum number of cars sold?
3. How many cars were sold on Wednesday?
4. Which day had the minimum sales of cars?
5. How many more cars were sold on Tuesday than on Monday?



What I Have Learned

Now that you have learned the basic features of linear and non-linear texts, try to interpret and deduce data from the table below.

Final Medal Tally of the SEA Games

Country	Gold	Silver	Bronze	Total
Thailand	95	83	69	247
Singapore	84	73	102	259
Vietnam	73	53	60	186
Malaysia	62	58	66	186
Indonesia	47	61	74	182
Philippines	29	36	66	131
Myanmar	12	26	31	69
Cambodia	1	5	9	15

Source: <https://cnnphilippines.com/sports/2015/06/16/sea-games-philippines-final-medal-tally.html>



What I Can Do

Let us see if you can use non-linear texts in real-life situations. Recall some highlights in your life's journey and make a Road Map. Describe each stop by using pictures and descriptions that tell the story of how you arrived at this point in your life. You must have a minimum of 5 "stops".

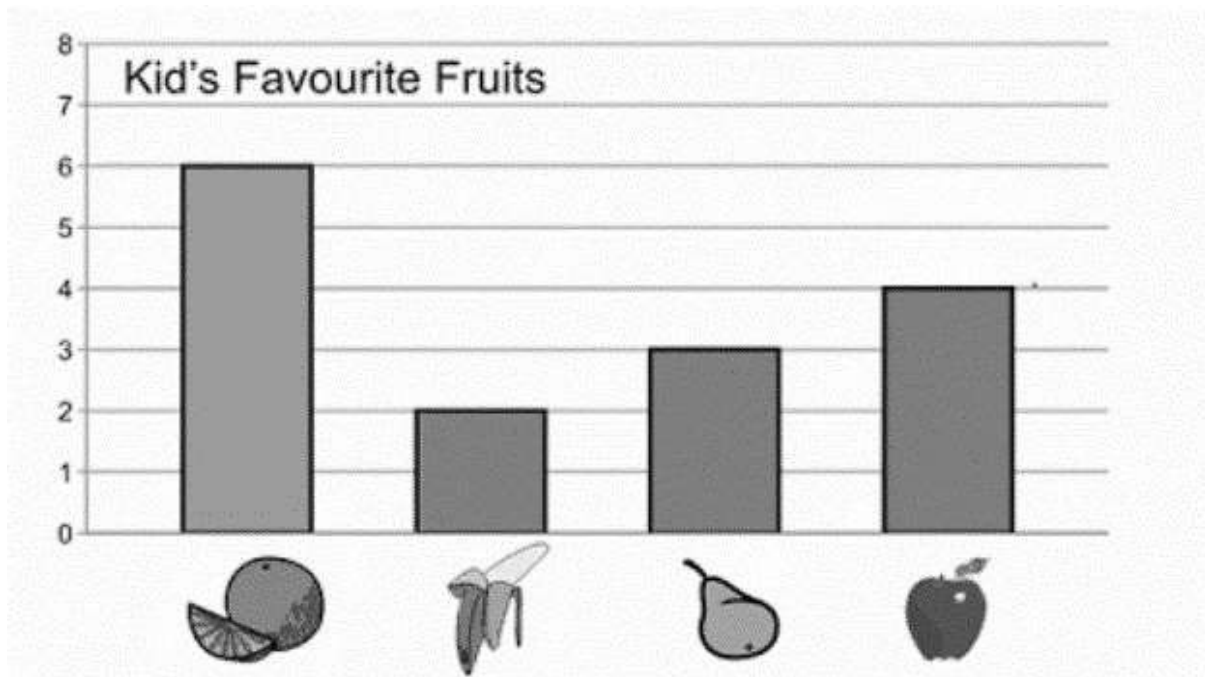




Assessment

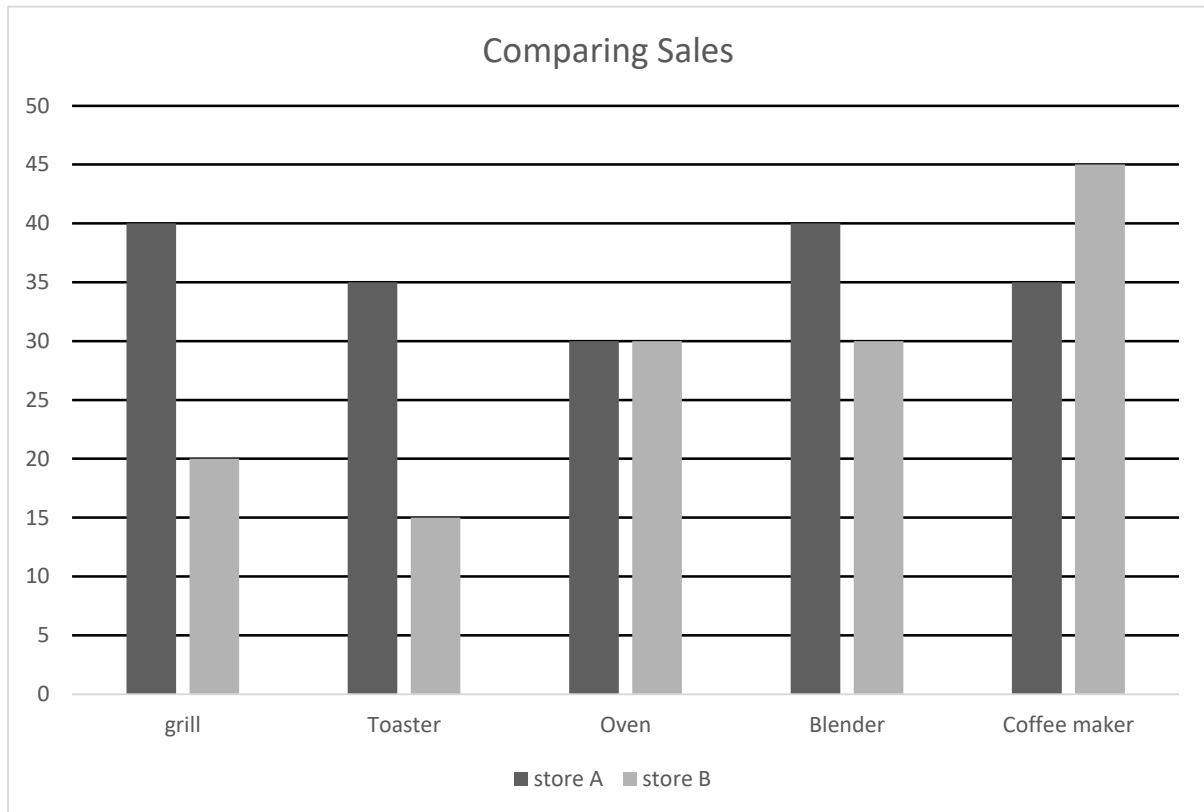
At this point, you have a clear picture of the features of linear and non-linear texts. So, to test your understanding, analyze the graphs and answer the questions that follow.

A.



1. How many kids liked apples? _____
2. Which fruit did the most kids like? _____
3. Which fruit did the kids like the least? _____
4. How many kids liked bananas? _____
5. How many kids liked either pear or bananas? _____
6. How many kids liked either oranges or apples? _____

B. Mr. Peter owns two kitchen appliance stores. He compares the sales of two stores and recorded the information in a bar graph. Use the bar graph to answer the questions.



- Which item sold the most in Store B?

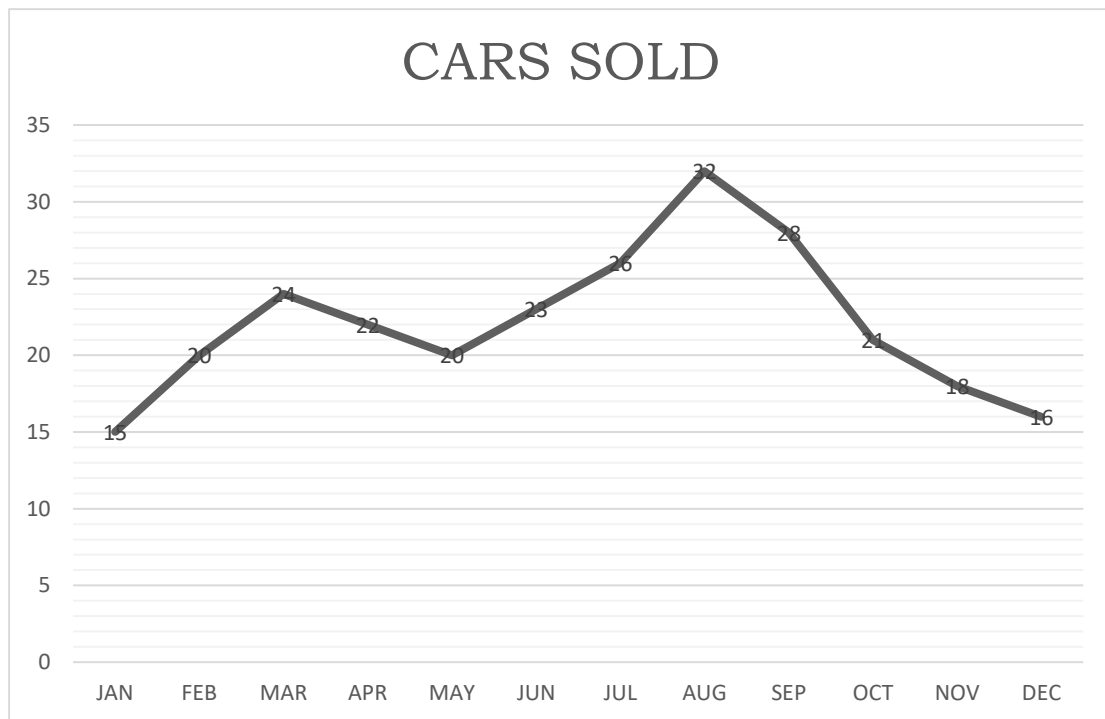
- Which store sold the least number of toasters?

- The number of grills sold by store A is twice of store B. Is it correct?

- What is the difference on sales of blenders between Store A and Store B? _____
- How many total appliances were sold by Store A?

C. Line Graph Worksheet – 3C AUTO SALES

Here is a graph showing the sales of used cars at the Salamander Autos.



Use the line graph to answer the following questions about the data.

1. How many cars were sold in May? _____
2. How many cars were sold in the first 3 months of the year? ____
3. How many more cars were sold in July than May? _____
4. Which month had 26 car sales? _____
5. Answer TRUE, FALSE, or CAN'T TELL to each of the statement below:

a)	The beginning and end of the year had the lowest number of car sales.	
b)	Car sales increased steadily from March to August.	
c)	August had twice as many sales as December.	
d)	Salamander Autos made the most money in August and September.	
e)	Car sales decreased from August to December.	

Source: Math-SALAMANDERS.COM



Additional Activities

Here are some steps you could follow in interpreting non-linear text to linear text or extracting information from a written text to non-linear text.

Non-Linear Text to Linear Text

Step 1: Interpret a diagram, table, charts and graphs and present the information in your own words.

Step 2: Organize, present and possibly compare information.

Step 3: Describe an object, event or series of events.

Linear Text to Non-Linear Text

Step 1: Read the passage to get a general idea of the subject matter.

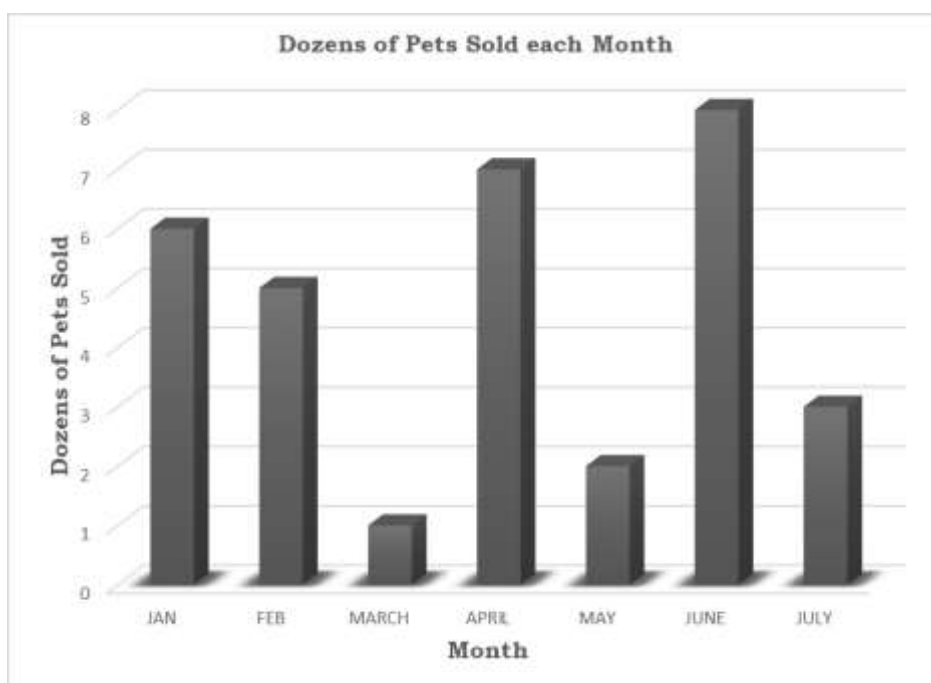
Step 2: Look at the visual to identify what information is needed to complete the chart.

Step 3: Locate the relevant information in the passage and transfer it to the chart. Use only key words or phrases.

Step 4: You may be required to classify information into categories under headings.

In this stage, increase what you have learned by performing this task.

1. Interpret the data presented below.



Lesson

2

Transcoding Information from Linear to Non-Linear Texts & Vice-Versa

In the previous lesson, you have learned the salient features of linear and non-linear texts and the difference between the two. Understanding texts is vital in our daily activities because it is only then can we give correct interpretation of the ideas presented from linear to non-linear text and vice-versa.

In this lesson, you will learn and understand steps in translating and transcoding information.



What I Know

Let us see if you can still remember the things you have learned in Lesson 1. Answer the activity below.

The statements below describe the features of linear and non-linear texts. To distinguish each, write **T** if the statement about linear and non-linear text is true and **F** if it is not true.

- _____ 1. Non-Linear text focuses on the arrangement of the words both grammatically and stylistically.
- _____ 2. Texts with visuals or graphs are considered as examples of non-linear texts.
- _____ 3. In linear text, the readers don't have to go through the text in a sequential manner in order to make sense of the text.
- _____ 4. Novels, poems, short stories, letters, articles and all those texts we read from the beginning to the end, are linear texts.
- _____ 5. Non-linear text is combined with visual elements.



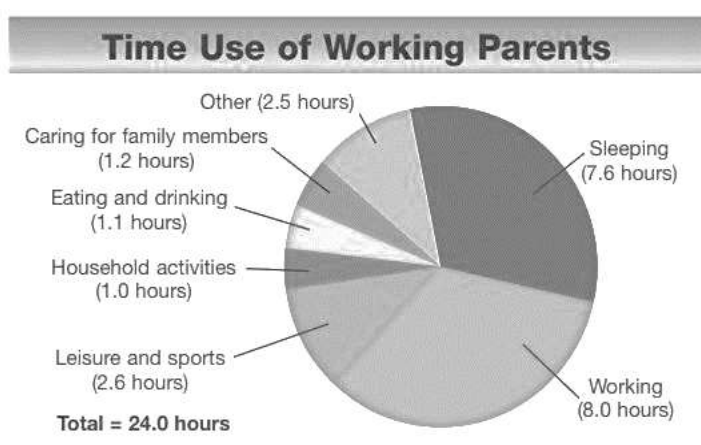
What's In

After knowing and understanding the salient features of linear and non-linear texts, how did it help you in drawing and transcoding information?



What's New

To deepen your understanding about the lesson, analyze and draw data from the pie chart below.



Working parents juggle tasks and manage their time wisely to never miss anything in a day. Here is a sample pie graph showing the time used by parents to manage and balance work and family time.

Answer the questions and construct a short paragraph out of your answers. The first one is done for you.

1. About how much time a day? Do your parents spend on the activities listed on the pie graph?

Based on the pie graph, working parents use 5.9 hours in accomplishing family-related activities aside from work and rest.

Now your turn, compare your parents' daily time activities to those listed in the Pie graph.

2. On which activities do your parents spend more time than the pie graph shows?

My parents spend more time on _____ than the ones shown in the pie graph.

3. On which activities do they spend less time than the pie chart shows?

My parents spend less time on _____ than the ones shown in the pie graph.



What is It

The activity which you have just answered allows you to analyze and interpret data. So, to challenge you more, discuss your answers on the following questions:

1. How did you come up with your answers in the activity?
2. How do you interpret graphs, tables and charts?
3. What are the steps or ways to be considered in helping you transcode information from linear to non-linear texts and vice- versa?

Here are some notes and tips on how to interpret text from linear to non-linear and vice-versa. Use the answers you have from the previous activity and see if you have followed some of the tips listed below.

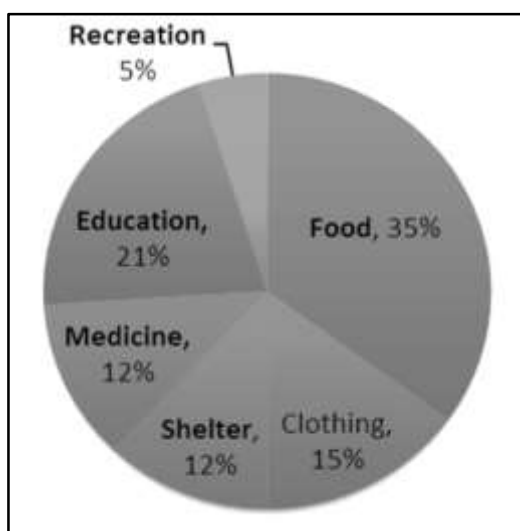
Steps for a simple non-linear interpretation:

- Read the title or label.
- Pay attention to every information.
- Understand the scales of measurements used.
- Pay attention to the trends (increase/decrease/stable) shown.
- Write an overview or the main idea.
- Write the key features.
- Conclude by giving prediction or proposal based on the data gathered from the non-linear text.

Tips on how to do the information transfer:

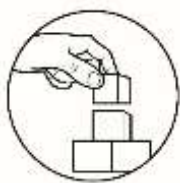
- Spend 5 minutes reading the graphs/charts etc.
- Make sure you understand axes.
- Make sure you follow lines on graph.
- Focus on the key information.
- Compare if two graphic organizers are provided.
- Think about the time period – tenses.
- Vary your vocabulary.
- Organize information clearly.
- Write neatly.

Study the sample below.



The pie shows the family distribution of expenses in a month. Most of the expenses go to food which takes 35% of the whole budget. 21% goes to children's education, clothing takes 15% and both medicine and shelter take 12%, respectively. The remaining 5% is allotted for the family's recreational activities.

Source: <http://ilaperilousgurlz.blogspot.com/2011/03/lets-transfer-information-from-non.html>



What's More

It is very important that you are able to interpret and transcode information. This time, check your skill on interpreting and transcoding information by answering the following exercises.

A. Below is a chart containing the result of a survey taken from two sections of Grade 7 classes. Study the data presented and answer the questions or do the required tasks.

Title of Myths/ Legends/ Epics	Number of Students who Like It			
	Section Jewel		Section Jasper	
	Male	Female	Male	Female
1. The Creation Story	20	20	20	20
2. Maria Makiling	15	25	13	27
3. The Good Prince Bantugan	30	10	32	8

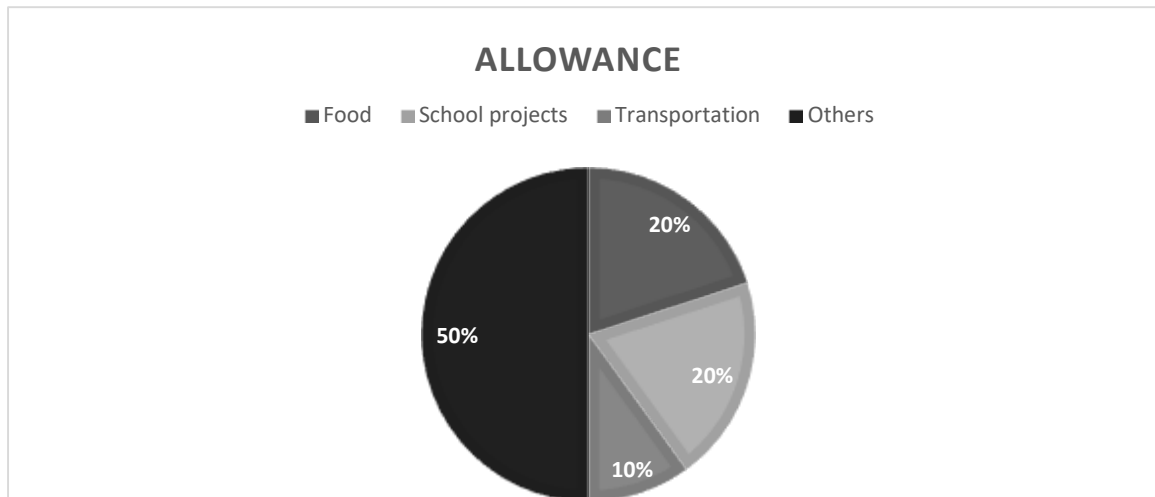
Process Questions:

1. How many students are there in section Jewel? How about in section Jasper?
2. Based on the sections surveyed, what conclusions can you make about the preferred story of male and female students?
3. Write at least (5) sentences about the data as inferred from the chart.

Source: Grade 7 English Learner's Material. Manila: FEP Printing Corp. p.77

B. Transcode the non-linear text to linear text

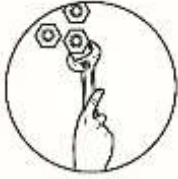
1. You were given by your parents five hundred pesos as allowance good for a week. Based on the pie graph shown below, how much would be allotted for each of the following areas? Write your answers on a separate sheet of paper.



What I Have Learned

Suppose you are selling two different kinds of magazine for a school fund-raising campaign. Show how you keep track of your sales for one week by using a graph with the following data:

Monday: 6 fashion magazines and 2 sports magazines,
Tuesday: 6 fashion magazines and 3 sports magazines,
Wednesday: 8 fashion magazines and 5 sports magazines,
Thursday: 6 fashion magazines and 3 fashion magazines,
Friday: 2 fashion magazines and 4 sports magazines,
Saturday: 3 fashion magazines and 1 sports magazine, and
Sunday: 2 fashion magazines and 1 sports magazine.



What I Can Do

You have already learned the steps in interpreting text and transcoding information. Now try transcoding the following exercises below:

LINEAR CONNECTION: Read the paragraph that follows. Carefully examine the data presented in the paragraph and interpret it using an appropriate graphical presentation. Use colors to highlight parts/data in your presentation. Present your output.

1. On Saving

As a young teen, Riz does not enjoy as much as other teenagers would. Her weekend is spent on looking for work so she can earn her allowance. She spends two hundred pesos a week. One hundred pesos for her lunch, eighty pesos for her fare and twenty pesos for classroom dues. She earns more than what she needs for the week. On Saturdays, her routine would be to go to a distant relative and wash clothes for a small earning of one hundred pesos. In the afternoon, she volunteers weeding at a neighbor's garden for an hour and gratefully receives fifty pesos for the work extended.

On Sunday after church, she would iron out her teacher's uniform for a fee of one hundred pesos. Despite her weekend routine, she remains to be one of the smartest in class.

Source: Grade 7 English Learner's Material. Manila: FEP Printing Corp., p.79



Assessment

Now that you know how to interpret data, answer the items provided below.

Direction: Analyze the following non-linear text and transcode information to linear text.

A. E-Commerce Activity in the Philippines



Source: Images.App.Goo.Gl, 2020. <https://images.app.goo.gl/vavzh242X4EyAPWx6>

B. Read the following linear text and transcode it to non-linear text.

According to the survey, 33% of the students listen to pop music while 29% listen to indie and rock music, 15% listen to country music, 13% listen to metal, and 10% listen to classical music.

Source: <https://www.scribd.com/document/404931656/Linear-to-Nonlinear-Quiz-docx>



Additional Activities

To further increase your skills in transcoding data, create a non-linear text to present the information below.

1. The different chores I perform at home
2. The 5 things I will buy if I have three thousand pesos. (indicate prices)



Answer Key

Lesson 1

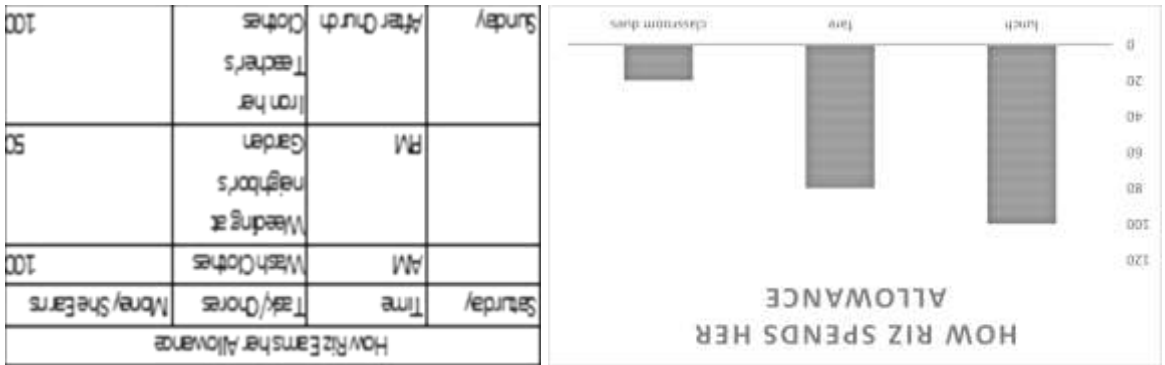
<p>Assessment</p> <p>A.</p> <ol style="list-style-type: none"> 4 orange Banana 2 5 10 <p>B.</p> <ol style="list-style-type: none"> Coffee Maker Store B Yes 10 180 20 59 6 July a. Yes b. False c. Yes d. Yes e. False <p>C.</p> <ol style="list-style-type: none"> 1 2 3 4 5 6 7 8 9 10 11 12 13 14 15 16 17 18 19 20 21 22 23 24 25 26 27 28 29 30 31 32 33 34 35 36 37 38 39 40 41 42 43 44 45 46 47 48 49 50 51 52 53 54 55 56 57 58 59 60 61 62 63 64 65 66 67 68 69 70 71 72 73 74 75 76 77 78 79 80 81 82 83 84 85 86 87 88 89 90 91 92 93 94 95 96 97 98 99 100 	<p>What's New</p> <p>Activity 1</p> <ol style="list-style-type: none"> LT NLT LT LT NLT LT NLT LT LT NLT NL <p>Activity 2:</p> <ol style="list-style-type: none"> Lake Maughan T'boli, South Cotabato 1, 756 above sea level Crater; Mt. Parker 7 hours Seven Kilometers 	<p>What I Know</p> <ol style="list-style-type: none"> Linear Non-Linear Texts Letters Articles Tables Maps Charts Graphs Novels <p>What's More</p> <ol style="list-style-type: none"> 26 Friday 6 Monday 3
---	--	---

Lesson 2

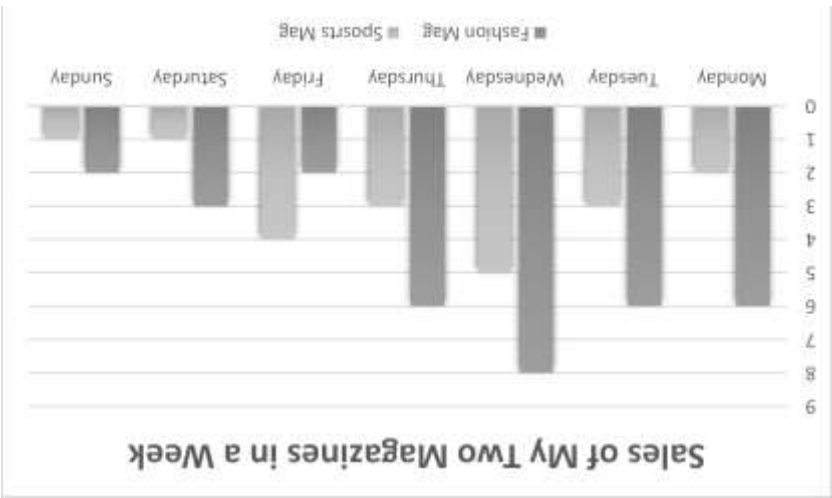


According to the ESA 2018 Sales, Demographic, and Usage Data release, US households use games in the following platforms: 41% of the total number of surveyed households use personal computers in gaming, both smartphones and gaming consoles hold 36% each. 24% uses wireless device or tablet an, 14% uses handheld system and 8% uses VR Device.

Assessment



What I Can Do



What I Have Learned

References

Grade 7 English Learner's Material. Manila: FEP Printing Corp., p.77

Grade 7 English Learner's Material. Manila: FEP Printing Corp., p.79

www.soxph.com, Detourista.com, sarasallador.blogspot.com Ph.asiatatler.com)

"Difference Between Linear And Nonlinear Text | Compare The Difference Between Similar Terms". Compare The Difference Between Similar Terms, 2020. <http://www.differencebetween.com/difference-between-linear-and-nonlinear-text/>.

"Line Graph Worksheets". Mathworksheets4kids.Com, 2020.
<http://www.mathworksheets4kids.com/line-graph.php>.

"Line Graph Worksheets". Mathworksheets4kids.Com, 2020.
<https://www.mathworksheets4kids.com/line-graph/interpret-easy-large.png>.

"1. Family Expenses Month: Recreation; 5.00%". Scribd, 2020.
<https://www.scribd.com/document/404931656/Linear-to-Nonlinear-Quiz-docx>.

<https://www.broadbandsearch.net/blog/online-gaming-statistics>
RAHMAN, NABILAH, and View profile. "Let's Transfer Information From Non-Linear To Linear Text". Ilaperilousgurlz.Blogspot.Com, 2020.
<http://ilaperilousgurlz.blogspot.com/2011/03/lets-transfer-information-from-non.html>.

For inquiries or feedback, please write or call:

Department of Education – Bureau of Learning Resources (DepEd-BLR)

Ground Floor, Bonifacio Bldg., DepEd Complex
Meralco Avenue, Pasig City, Philippines 1600

Telefax: (632) 8634-1072; 8634-1054; 8631-4985

Email Address: blr.lrqad@deped.gov.ph * blr.lrpd@deped.gov.ph