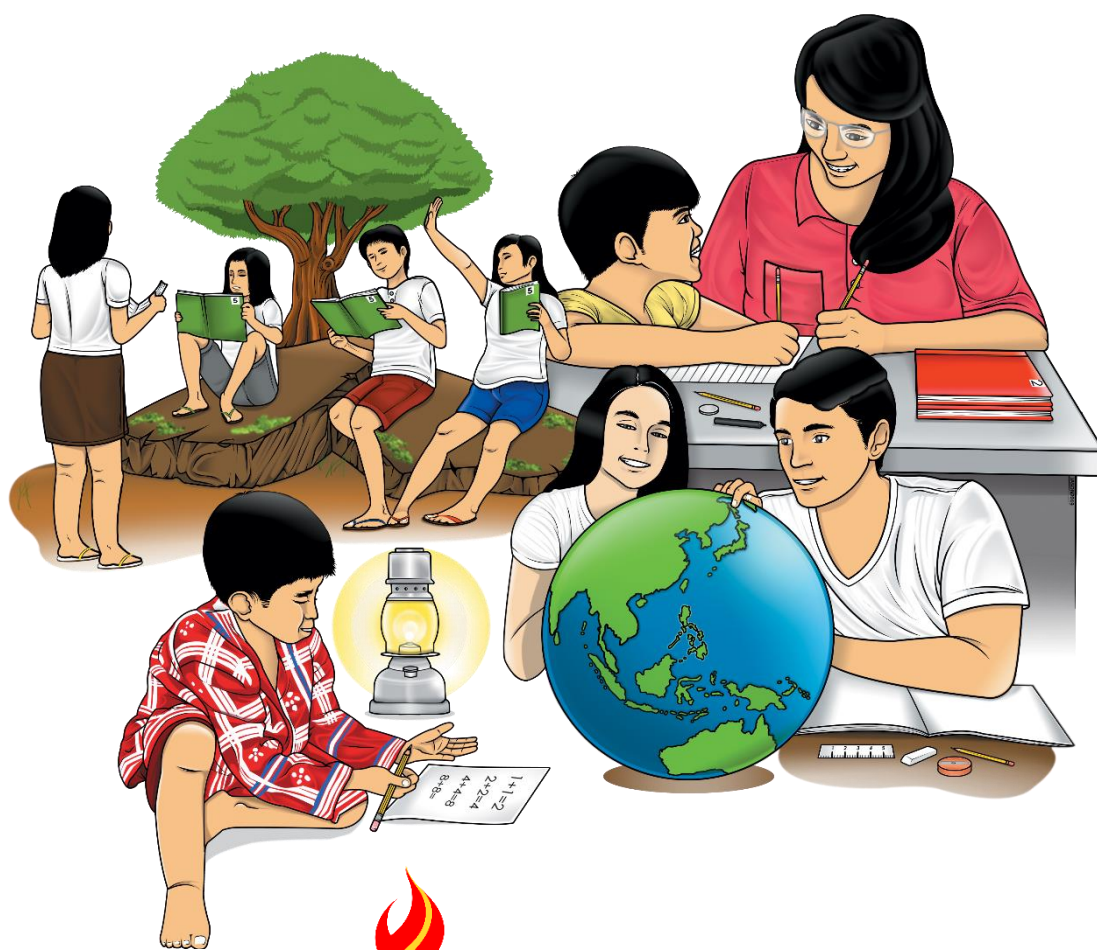


Senior High School

# Understanding Culture, Society and Politics

## Quarter 1 – Module 4: Analyze the Significance of Cultural, Social, Political, and Economic Symbols and Practices



**Understanding Culture, Society and Politics**

**Alternative Delivery Mode**

**Quarter 1 – Module 4: Analyze the Significance of Cultural, Social, Political, and Economic Symbols and Practices**

**First Edition, 2020**

**Republic Act 8293, section 176** states that: No copyright shall subsist in any work of the Government of the Philippines. However, prior approval of the government agency or office wherein the work is created shall be necessary for exploitation of such work for profit. Such agency or office may, among other things, impose as a condition the payment of royalties.

Borrowed materials (i.e., songs, stories, poems, pictures, photos, brand names, trademarks, etc.) included in this module are owned by their respective copyright holders. Every effort has been exerted to locate and seek permission to use these materials from their respective copyright owners. The publisher and authors do not represent nor claim ownership over them.

Published by the Department of Education

Secretary: Leonor Magtolis Briones

Undersecretary: Diosdado M. San Antonio

**Development Team of the Module**

**Authors:** Jenneth D. Dela Cruz, Jonathan F. Batac and Donna Marie Daya

**Content Editor:** Leuvina D. Erni

**Language Editor:** Dr. Myrna B. Martino

**Reviewers:** Librado F. Torres and Normina B. Hadji Yunnos

**Illustrator:** Edivin Kevin D. Abella, Mark Alvin D. Asis, Melvin G. Evardone

Rene S. Halos, and Benigno G. Surio

**Layout Artist:** Bureau of Learning Resources; SDO LRMS Team and the Authors

**Management Team:** Malcom S. Garma, Director IV

Genia V. Santos, CLMD Chief

Dennis M. Mendoza, Regional EPS In-Charge of LRMS

Micah S. Pacheco, Regional ADM Coordinator

Loreta B. Torrecampo, CESO V, Schools Division Superintendent

Librado F. Torres, CID Chief

Normina B. Hadji Yunnos, Division EPS In-Charge of LRMS  
and Division ADM Focal Person

Printed in the Philippines by \_\_\_\_\_

**Department of Education – National Capital Region**

Office Address: Misamis St., Bago Bantay, Quezon City

Telefax: 02-929-0153

E-mail Address: depedncr@deped.gov.ph

Senior High School

# **Understanding Culture, Society and Politics**

**Quarter 1 – Module 4:**

**Analyze the Significance of  
Cultural, Social, Political, and  
Economic Symbols and Practices**

# Introductory Message

For the facilitator:

Welcome to the Understanding Culture, Society and Politics for Senior High School Alternative Delivery Mode (ADM) Module on Analyze the Significance of Cultural, Social, Political, and Economic Symbols and Practices !

This module was collaboratively designed, developed and reviewed by educators both from public and private institutions to assist you, the teacher or facilitator in helping the learners meet the standards set by the K to 12 Curriculum while overcoming their personal, social, and economic constraints in schooling.

This learning resource hopes to engage the learners into guided and independent learning activities at their own pace and time. Furthermore, this also aims to help learners acquire the needed 21st century skills while taking into consideration their needs and circumstances.

In addition to the material in the main text, you will also see this box in the body of the module:



## ***Notes to the Teacher***

This contains helpful tips or strategies that will help you in guiding the learners.

As a facilitator you are expected to orient the learners on how to use this module. You also need to keep track of the learners' progress while allowing them to manage their own learning. Furthermore, you are expected to encourage and assist the learners as they do the tasks included in the module.

For the learner:

Welcome to the Understanding Culture, Society and Politics for Senior High School Alternative Delivery Mode (ADM) Module on Analyze the Significance of Cultural, Social, Political, and Economic Symbols and Practices !

The hand is one of the most symbolized part of the human body. It is often used to depict skill, action and purpose. Through our hands we may learn, create and accomplish. Hence, the hand in this learning resource signifies that you as a learner is capable and empowered to successfully achieve the relevant competencies and skills at your own pace and time. Your academic success lies in your own hands!

This module was designed to provide you with fun and meaningful opportunities for guided and independent learning at your own pace and time. You will be enabled to process the contents of the learning resource while being an active learner.

This module has the following parts and corresponding icons:



***What I Need to Know***

This will give you an idea of the skills or competencies you are expected to learn in the module.



***What I Know***

This part includes an activity that aims to check what you already know about the lesson to take. If you get all the answers correct (100%), you may decide to skip this module.



***What's In***

This is a brief drill or review to help you link the current lesson with the previous one.



***What's New***

In this portion, the new lesson will be introduced to you in various ways such as a story, a song, a poem, a problem opener, an activity or a situation.



***What is It***

This section provides a brief discussion of the lesson. This aims to help you discover and understand new concepts and skills.



***What's More***

This comprises activities for independent practice to solidify your understanding and skills of the topic. You may check the answers to the exercises using the Answer Key at the end of the module.



***What I Have Learned***

This includes questions or blank sentence/paragraph to be filled in to process what you learned from the lesson.



### ***What I Can Do***

This section provides an activity which will help you transfer your new knowledge or skill into real life situations or concerns.



### ***Assessment***

This is a task which aims to evaluate your level of mastery in achieving the learning competency.



### ***Additional Activities***

In this portion, another activity will be given to you to enrich your knowledge or skill of the lesson learned. This also tends retention of learned concepts.



### ***Answer Key***

This contains answers to all activities in the module.

At the end of this module you will also find:

### ***References***

This is a list of all sources used in developing this module.

The following are some reminders in using this module:

1. Use the module with care. Do not put unnecessary mark/s on any part of the module. Use a separate sheet of paper in answering the exercises.
2. Don't forget to answer *What I Know* before moving on to the other activities included in the module.
3. Read the instruction carefully before doing each task.
4. Observe honesty and integrity in doing the tasks and checking your answers.
5. Finish the task at hand before proceeding to the next.
6. Return this module to your teacher/facilitator once you are through with it.

If you encounter any difficulty in answering the tasks in this module, do not hesitate to consult your teacher or facilitator. Always bear in mind that you are not alone.

We hope that through this material, you will experience meaningful learning and gain deep understanding of the relevant competencies. You can do it!



## ***What I Need to Know***

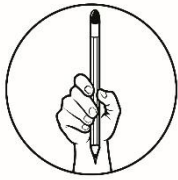
This module was designed and written with you in mind. It is here to help you understand the culture, science and politics that will be beneficial for you not only as a student but also as an individual and Filipino citizen. The scope of this module permits it to be used in many different learning situations. The language used recognizes the diverse vocabulary level of students. The lessons are arranged to follow the standard sequence of the course. But the order in which you read them can be changed to the textbook you are now using.

The module will focus on this week's lesson about cultural, social, political and economic symbols and practices.

After going through this module, you are expected to:

1. Identify cultural, social, political, and economic symbols.
2. Discuss cultural, social, political, and economic practices.
3. Analyze the significance of cultural, social, political, and economic symbols and practices.





## What I Know



What a pleasant day to start! You are going to learn new concepts again for this week. Before you start with the discussion, notice the pictures below. Are you familiar with some of Filipino symbols and practices? Identify them and write down your answer below each picture. Try it!



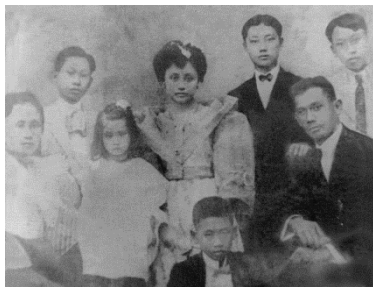
1. \_\_\_\_\_



2. \_\_\_\_\_



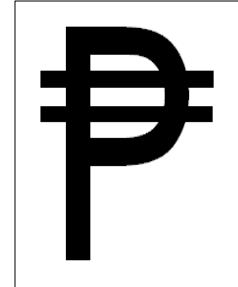
3. \_\_\_\_\_



4. \_\_\_\_\_



5. \_\_\_\_\_



6. \_\_\_\_\_

If you identify all the pictures above correctly, congratulations! It means you already have a prior knowledge about cultural symbols and practices. Learning the lesson will be much easier for you. If you did not get all of them correctly, do not worry because as you proceed in this module, you will learn more about the cultural, social, political, and economic symbols and practices. Are you ready?



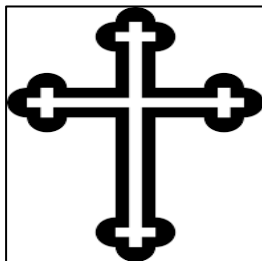




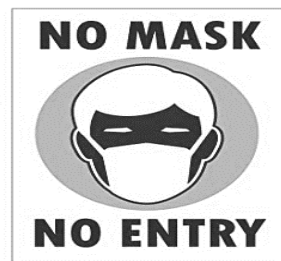
## What's In

On your last module, you have learned two concepts: Ethnocentrism and cultural relativism. Regardless of the cultural universals that we have, cultural differences are still much more widespread. Ethnocentrism also known as cultural superiority complex, is a belief where your own culture over the other cultures which results from judging other cultures by your own cultural ideals. On the other hand, cultural relativism is the opposite of ethnocentrism. It is the idea that every culture difference must be understood and must not be judged based on one's own culture as there is no superior culture over the other. These two are part of our cultural aspects which shapes the interaction of human within a society and no matter how society perceived a culture, cultural practices will remain to be practiced by the people.

**DIRECTIONS:** Write down your thoughts on which among the two social symbols do you often see? Compare them and explain which of the two should be more posted.



vs.



---

---

---

---

Part of this cultural universals is the use of symbols in sharing same meanings to represent an idea or ideology. Symbols enable people to go beyond what is known or seen by creating a connection between otherwise very different concepts and experiences.





## ***What's New***

### **Activity 1.**

**DIRECTIONS:** Give the meaning of each of the following symbols and practices. Write your answer on the space provided.

1. Jeepneys

2. Philippine National Flag

3. Bayanihan

4. Circumcision

5. Fiesta

6. Philippine Eagle

7. "L" hand gesture

8. clenched fist in the Philippines

9. yellow color

10. black color



## **What Is It**

### **Cultural, Social, Political and Economic Symbols and Practices**

Symbol is an object, word, or action that stands for something else, without natural relationship, that is culturally defined. Symbols such as gestures, signs, objects, signals, and words, help people understand the world. Symbols provide clues to understanding experiences. They relay recognizable meanings that are shared by societies. Symbolism, on the other hand, is when something represents abstract ideas or concepts; it assigns names, denominations, and defines relations between various elements (actors, actions, goals, means, objects, values, etc.) articulated within a narrative.

#### **Functions of Symbols and Symbolism**

- ① Social symbols are used to transfer culture, ideologies, or beliefs from group to another group of people.
- ② Symbols are also used to preserve traditions or beliefs of a certain group of people.
- ③ All symbols contain the “face” and “hidden” values, the hidden value, in a functional perspective, holds greater meaning and importance than the face value.
- ④ Symbols and symbolism have been used to create movements, spread ideas, and share advocacies that surpasses time and distance.

#### **Types of Symbols**

Cultural Symbols – manifestation that signifies ideology of a particular culture that has meaning within that culture.

Social symbols – relating to human societies and its modes of organization (i.e., social classes, social problems, social issues, etc.)

Political symbols – used to represent a political standpoint; seen in various media and forms such as banners, flag, motto, etc.

Economic symbols – used in production, distribution, and consumption of goods and services like currency, market, labor, demands and other economic activities.

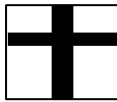


#### **General Examples of Cultural Symbols and Practices**

Objects, figures, sounds and colors
Facial expressions, word interpretations, or gestures such as handshakes and hand signals, instead of symbols and signs

**Cultural Practices** are the manifestation of a culture or sub-culture, especially concerning the traditional and customary practices of a particular ethnic or other cultural group. Examples: religious and spiritual, medical treatment, forms of artistic expressions, culinary, housing and child-rearing practices.

A religious symbol is an iconic representation intended to represent a specific religion, or a specific concept within a given religion.

### Some Examples of Religious Symbols Around the World

	Christian cross - The Christian cross has traditionally been a symbol representing Christianity or Christendom as a whole, and is the best-known symbol of Christianity.
	Star and crescent - The star and crescent symbol was used as the flag of the Ottoman Empire from 1844. It was only gradually associated with Islam, in particular, due to its ubiquitous use in the decorations of Ottoman mosques in the late 19th century. It was only occasionally adopted as an emblem of Islamic organizations, such as the All-India Muslim League in 1940 (later becoming the Flag of Pakistan), and the US American Nation of Islam in the 1970s.
	Jewish flags- featuring hexagrams alongside other devices appear from As early as the 14th or 15th century CE. Use of the Star of David as representing the Jewish community is first recorded in Vienna in the 17th century CE.

### Some Examples of Cultural Symbols in the Philippines

The national items and symbols are used to create Filipino identity and to promote solidarity and unity in the nation.

			
Philippines Flag	Philippines Eagle	Philippine National Anthem	National Hero

### Some Examples of Cultural Practices in the Philippines

**Traditional Medical Practices-** belief in “albularyo”, herbal medicines, alternative medicines, and other home remedies.

**Religious/ Spiritual Practices** – Obando Festival in Bulacan for fertility, Panaad sa Camiguin as act of penance and pilgrim. Feast of the Black Nazarene in Manila, etc.

**Culinary Practices-** Rice 3 meals a day, Adobo, Sinigang, street foods, Balut, rice cakes, etc. Child- rearing Practices- respectful (used of the words mano, po at opo ), obedience to parents and elders, no talking back to elders, removing footwear before entering the house, family mealtime, ninong/ninang, ate/kuya, punishment using belt/tsinelas.

## Social Symbols and Practices

It is a visible, external denotation of one's social position, indicator of one's social or economic status.

**Status Symbol** relates to how individuals and groups interact and interpret various cultural symbols. It can be seen in clothing and possessions, societal recognition, material possessions and other recognized symbols used worldwide such as white dove for peace, red heart for love, etc.

### Examples of Common Social Symbols

#### Colors

Black- evil, death
White - purity, peace
Red - blood, war, possession, danger
Purple- royalty

Some social symbols are informative or instructive like the following symbols.



## Political Symbols and Practices

The artifacts or objectifications of different political meanings especially related to power. Political symbols are usually used to embody an ideology, an advocacy, or a group of people with same principles. Political practices are common things that are done within a state or country. It is related to the practices done in the administration, distribution and attainment of power, bureaucratic composition, etc.

### Examples of Common Political Symbols (Colors)

Black- anarchism, fascism, Catholicism, Christian democracy
Blue- conservatism, Judaism, men, monarchism, liberalism
Brown- Nazism, fascism
Gold- capitalism, liberalism

### Example of Common Political Symbols in the Philippines



## Political Practices in the Philippines

- Political Dynasties – it is the concentration, consolidation or perpetuation of public office and political power by persons related to one another.
- Filipino Clans
- Celebrities turned Politicians.
- Palakasan system – refers to a system of getting an advantage when having or knowing someone powerful from the office that can recommend you. This usually happens within government offices.
- Trapo ( Traditional Politics )
- Catholic Church Influence
- Power Revolt

## Economic Symbols

This represents economic standpoint. It can be seen in various media such as Stock Exchange, Money, and Currency, Gold and Petroleum, Life Insurance, Banking, etc.

Examples:

New Zealand	\$	New Zealand dollar
Philippines	₱	Philippine peso
South Korea	₩	South Korean won
Thailand	฿	Thai baht

## Philippine Economic Practices

In terms of savings, one of the traditional way of saving money in Filipino is using “alkansya”. It is where they Filipino use bamboo as a vault to their money until it becomes full and ready to be withdrawn by its owner. Another way of economic practice of Filipino is “paluwagan”. It is a group savings where group of people agrees to give money to a money manager who is also part of this group and manages the money. The money will cycle throughout the group.

## Significance of Symbols and Symbolism

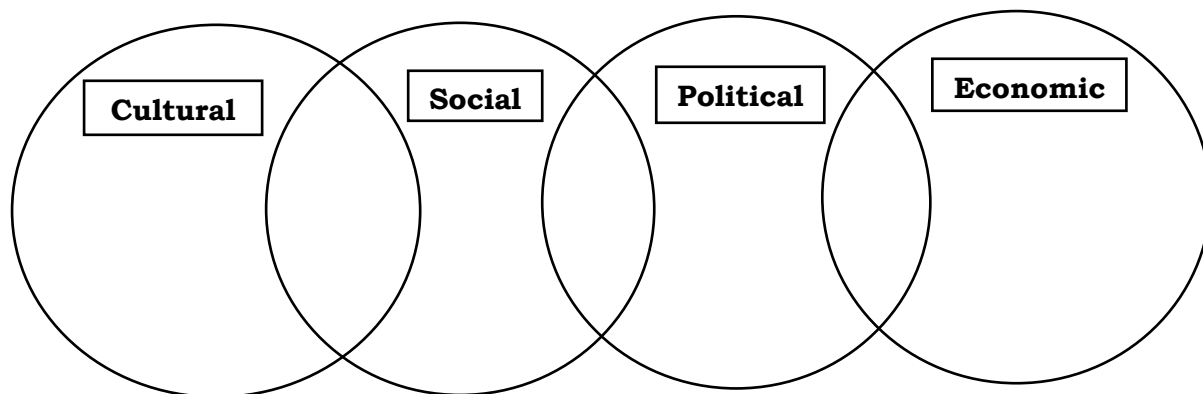
As rational thinkers, we have been making and giving meaning to symbols for a long time. Symbols have been part of our lives and growth as humankind. The usage of symbols and symbolism have given mankind an avenue to communicate with different groups of people, influence others of different ideologies, and preserve values that were transferred from generations to generations.



## What I Have Learned

### Activity 2

**DIRECTIONS:** Compare and contrast the importance of cultural, social, political, and economic symbols. Use the given graphic organizer.



4-5 points	3-2 points	1 point
Compared and contrast the importance of the four types of symbols completely and reasonably.	Lack of comparison and contrast of importance.	Read again the explanation of the lesson.



## What I Can Do?

### Activity 3

**DIRECTIONS:** Examine the following symbolic interactions. Give the importance of the symbols in the interaction that took place.

While Rina and Gregorio are strolling in the school, the Philippine national hymn begin to play in the background. Rina suddenly stops and stand still while putting her right hand on her chest. Gregorio saw what Rina did and do the same.

Significance:

---



---



---



In *Tiktok* community, there's a specific trending hand gestures called "woah" step. When Luis and his friends are reporting, they did the hand gestures and their classmates laugh.

Significance:

---



---



---

A German tourist is strolling around Rizal park. In front of Rizal's monument, he stumbled across this beautiful young lady and as being felt sorry for he might have hurt her, he combines his two palms, put it in front of his chest and repeatedly bow his head to the young lady. The lady said that she is not Japanese.

Significance:

---



---



---

The day before Donna and Angelo's wedding, their parents asked them that they should not see each other as they should follow the elder's beliefs that if a couple see each other before their big event, accidents might happen that will lead to cancellation of their wedding. But they did not listen. Instead, they go out and have their bridal shower and stag party together with friends and as a couple.

Significance:

---



---



---

10 -8	7-5	4-2	1
The answer is complete and reasonable.	The answer was not explained well but still reasonable.	The answer lacks explanation but manages to answer.	Answer is too vague. Suggested to read again the given situation.



## Assessment

**DIRECTIONS:** Analyze the following symbols and practices in the Philippines. Give its importance to our society. **Write your answer in two sentences.**

1. Fiesta- Philippines celebration of patrons

---

2. White color to wear in weddings- white is believed to be sign of purity

---

3. Painting of fruits- believed to bring prosperity

---

4. National Flag- symbolizes Philippines as a country

---

5. Paintings in recycable masks- creativity of Filipinos

---

6. V sign hand gesture – means peace

---

7. Jeepneys- Philippines national transportation means

---

8. Mall of Asia- Philippines Largest Mall

---

9. Color Yellow- In Philippines politics, this signifies liberal partylist

---

10. One peso coin- In Philippines currency, Rizal is in one peso coin.

---

## Answer Key

- What I Know
1. Mano po
  2. Folk Dance
  3. Philippines Eagle
  4. National Hero
  5. Misa/Banal na Eukaristiya
  6. Peso sign

A **culture** includes the group's shared practices, values, beliefs, norms and artifacts. One sociologist might analyze video of people from different societies as they carry on everyday conversations to study the rules of polite conversation from different world cultures. Another sociologist might interview a representative sample of people to see how email and instant messaging have changed the way organizations are run. Yet another sociologist might study how migration determined the way in which language spread and changed over time. A fourth sociologist might study the history of international agencies like the United Nations or the International Monetary Fund to examine how the globe became divided into a First World and a Third World after the end of the colonial era. Moreover, culture consists of thoughts (expectations about personal space, for example) and tangible things (bus stops, trains, and seating capacity). **Material culture** refers to the objects or belongings of a group of people. Metro passes and bus tokens are part of material culture, as are automobiles, stores, and the physical structures where people worship. **Nonmaterial culture**, in contrast, consists of the ideas, attitudes, and beliefs of a society. Material and nonmaterial aspects of culture are linked, and physical objects often symbolize cultural ideas.



**For inquiries or feedback, please write or call:**

Department of Education - Bureau of Learning Resources (DepEd-BLR)

Ground Floor, Bonifacio Bldg., DepEd Complex  
Meralco Avenue, Pasig City, Philippines 1600

Telefax: (632) 8634-1072; 8634-1054; 8631-4985

Email Address: [blr.lrqad@deped.gov.ph](mailto:blr.lrqad@deped.gov.ph) \* [blr.lrpd@deped.gov.ph](mailto:blr.lrpd@deped.gov.ph)