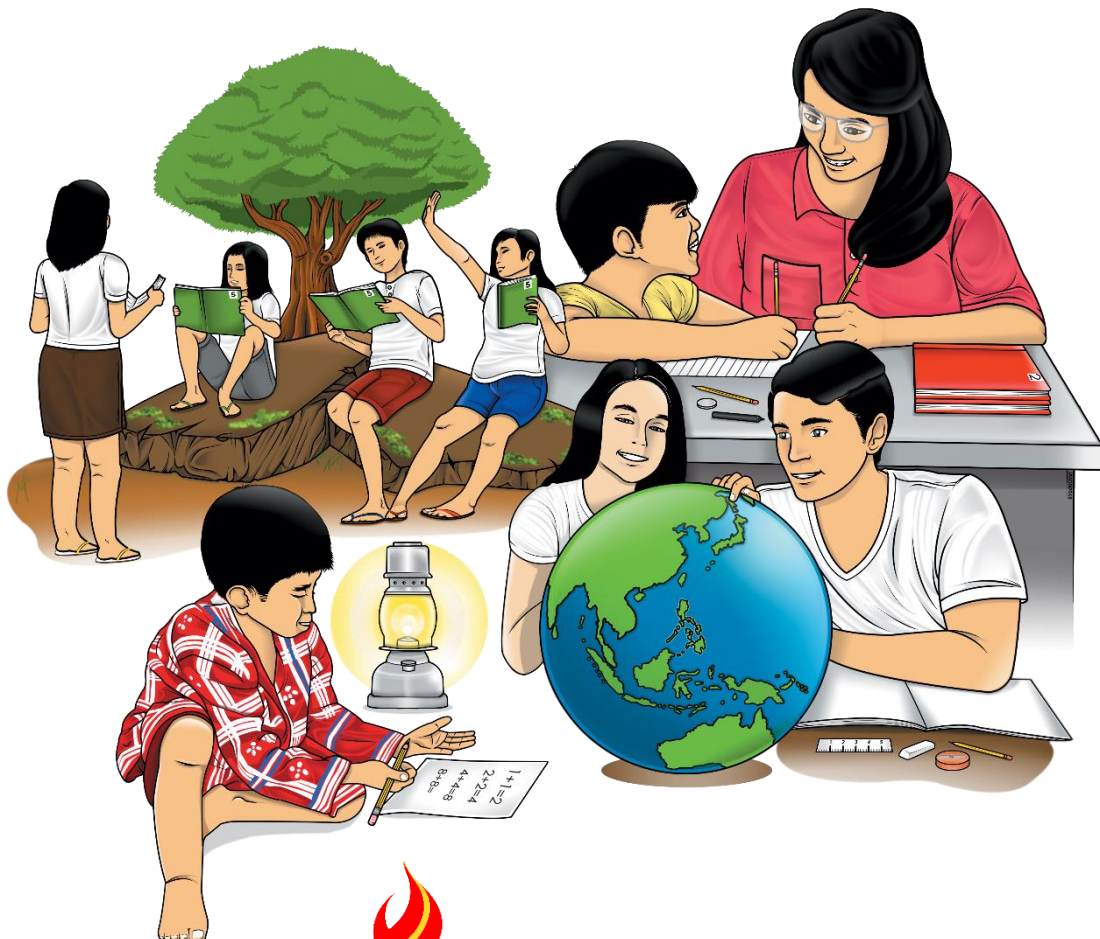


Technology and Livelihood Education

Home Economics

Module 7: Sewing Household Linens and Product Assessment



TLE (HE) – Grade 6
Alternative Delivery Mode
Module 7: Sewing Household Linens and Product Assessment
First Edition, 2020

Republic Act 8293, section 176 states that: No copyright shall subsist in any work of the Government of the Philippines. However, prior approval of the government agency or office wherein the work is created shall be necessary for exploitation of such work for profit. Such agency or office may, among other things, impose as a condition the payment of royalties.

Borrowed materials (i.e., songs, stories, poems, pictures, photos, brand names, trademarks, etc.) included in this module are owned by their respective copyright holders. Every effort has been exerted to locate and seek permission to use these materials from their respective copyright owners. The publisher and authors do not represent nor claim ownership over them.

Published by the Department of Education
Secretary: Leonor Magtolis Briones
Undersecretary: Diosdado M. San Antonio

Development Team of the Module

Writers: Maria Gina S. Balgos, Juvy G. Embucado

Editors: Gorgonio A. Batilaran Jr., Eva B. Fabraquel, Joan C. Adoyogan

Reviewers: Marvic S. Martinez, Jocelyn D. Sunsona

Illustrator: Jazzie D. Albaladejo, Alfa D. Robia

Layout Artist: Dean Pierre H. Besana, Jackielyn S. Cabangal

Lourdes Eleanor M. Miranda

Management Team: Ramir B. Uytico

Pedro T. Escobarte

Elena P. Gonzaga

Celestino S. Dalumpines IV

Donald T. Genine,

Jocelyn D. Sunsona

Marvic S. Martinez

Joan C. Adoyogan

Printed in the Philippines by _____

Department of Education – Region 6

Office Address: Duran Street, Iloilo, City 5000

Telefax: (033) 509-7653(0333)336-2816

E-mail Address: region6@deped.gov.ph

6

Technology and Livelihood Education

Home Economics

**Module 7: Sewing Household
Linens and Product Assessment**

Introductory Message

This Self-Learning Module (SLM) is prepared so that you, our dear learners, can continue your studies and learn while at home. Activities, questions, directions, exercises, and discussions are carefully stated for you to understand each lesson.

Each SLM is composed of different parts. Each part shall guide you step-by-step as you discover and understand the lesson prepared for you.

Pre-tests are provided to measure your prior knowledge on lessons in each SLM. This will tell you if you need to proceed on completing this module or if you need to ask your facilitator or your teacher's assistance for better understanding of the lesson. At the end of each module, you need to answer the post-test to self-check your learning. Answer keys are provided for each activity and test. We trust that you will be honest in using these.

In addition to the material in the main text, notes to the Teacher are also provided to our facilitators and parents for strategies and reminders on how they can best help you on your home-based learning.

Please use this module with care. Do not put unnecessary marks on any part of this SLM. Use a separate sheet of paper in answering the exercises and tests. And read the instructions carefully before performing each task. If you have any questions in using this SLM or any difficulty in answering the tasks in this module, do not hesitate to consult your teacher or facilitator.

Thank you.



What I Need to Know

This module was designed and written to sew creative and marketable household linens (table runners) as means to augment family income; and assess the finished products as to the quality (using rubrics).



What I Know

Choose the letter of the best answer. Write the chosen letter on a separate sheet of paper.

1. What is the cloth laid on top of table cloth or on a bare table?
 - a. table cover
 - b. table runner
 - c. table stopper
 - d. pillow case

2. Which of the following is the first step in sewing a table runner?
 - a. lay the fabric on the table, wrong side up
 - b. mark an allowance on the cloth
 - c. cut the fabric
 - d. press the fabric

3. Which is the second step in sewing a table runner?
 - a. cut the fabric
 - b. lay the drafted pattern on the cloth
 - c. mark allowance on the cloth
 - d. press the fabric

4. How many inch is the allowance of the raw edge after laying the drafted pattern on the fabric?
 - a. $\frac{1}{4}$ inch
 - b. $\frac{1}{2}$ inch
 - c. $\frac{3}{4}$ inch
 - d. 1 inch

5. After marking the cloth with allowance, which is the next step you should do?
 - a. baste and stitch the raw edges
 - b. remove hanging threads
 - c. add embroidery stitch
 - d. cut the fabric

6. What is the best thing to do to form the hem?
 - a. fold the fabric with $\frac{1}{2}$ inch allowance outward
 - b. fold the fabric with $\frac{1}{4}$ inch allowance outward
 - c. fold the fabric with $\frac{1}{2}$ inch allowance inward
 - d. fold the fabric with $\frac{1}{4}$ inch allowance inward

7. Which is the best way to keep the fold in place of a fabric after folding inward?
 - a. a permanent stitch
 - b. basting it all around
 - c. cutting the fold
 - d. making another fold

8. Which is the next step after the hem folded was basted?
 - a. check the table runner's parts
 - b. cut the excess threads
 - c. press the table runners
 - d. stitch the hemline by hand

9. When the table runner is done, which of the following you must do?
 - a. clean and check its parts
 - b. cut the hanging threads
 - c. press or iron the fabric
 - d. all of the above

10. Why does checking of finished product parts is applied?
 - a. accurate measurement on each part of a finished product
 - b. the neatness on each part of a finished product
 - c. quality of a finished product
 - d. all of the above

Lesson

1

Making Household Linen

The table runner is another kind of household linen. It is a narrow length of cloth placed on top of table cloth or on a bare table. Table runner is used in different ways. It can be laid down the center of the table, or laid across the table for decoration and design. It defines seating, or used to bring out a theme. A formal table arrangement on top of a table cloth where you can enjoy your meal with colors, structures and lines together with your family and friends during occasion.



What's In

Write True if the statement tells correct practices of safety precautionary measure in sewing and False if not.

- _____ 1. Use the thimble for pushing the needle through the cloth.
- _____ 2. Use your teeth in cutting the thread.
- _____ 3. Place the sewing tools properly in the sewing box after use.
- _____ 4. Keep the sewing tools out of children reach.
- _____ 5. Place the needle or pin between the lips.



Notes to the Teacher

Begin by orienting learners with the relevance of the module in providing varied, relevant activities and opportunities in improving learner's skills. Remind the learner to answer *What I Know*, *What Can I Do* and *Assessment* to test their own progress. Let them answer on a separate sheet of paper.



What's New

Identify the given picture. Write at least 5 sentences about it.



1. _____
2. _____
3. _____
4. _____
5. _____



What is It

How to Sew a Household Linen (Table Runner)

Materials:

Drafted pattern (measurement: 1.5 meter length and 12 inches wide), 1.5 meter fabric (printed), 1 spool thread, tailor's chalk / pencil, pins and needles

Tools:

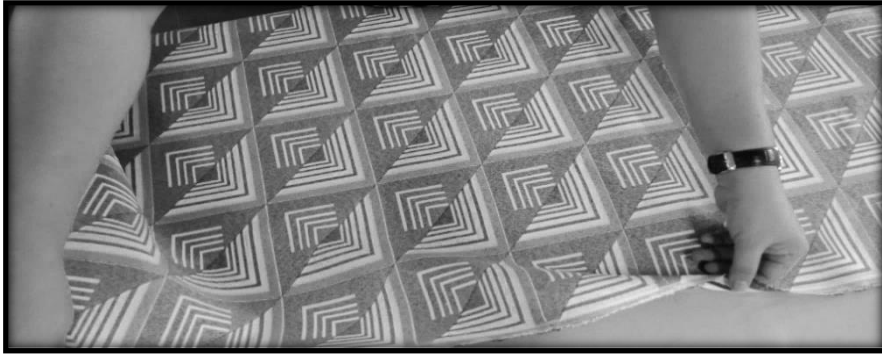
Ruler, tape measure, scissor

Equipment:

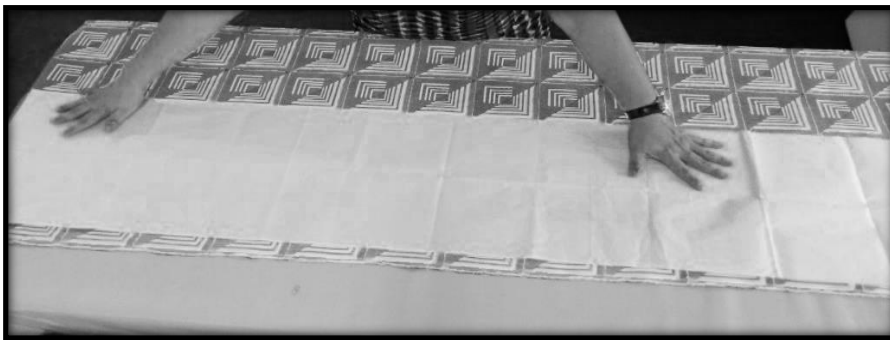
Iron, ironing board

Procedure:

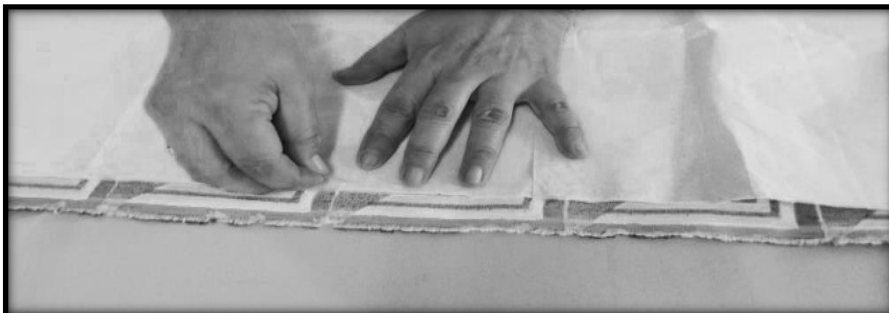
1. Lay the fabric on the table with the wrong side up.



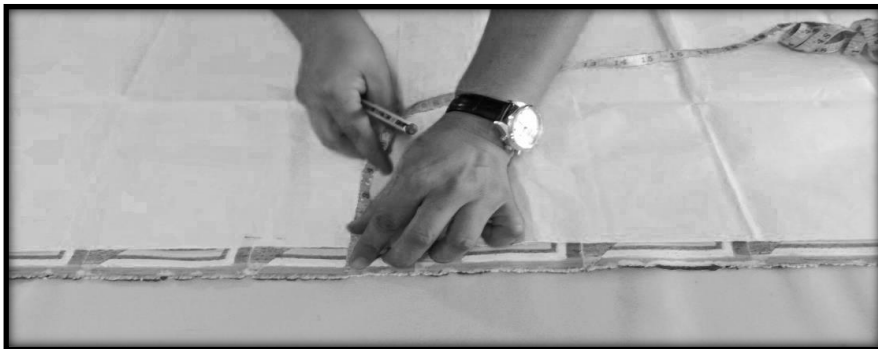
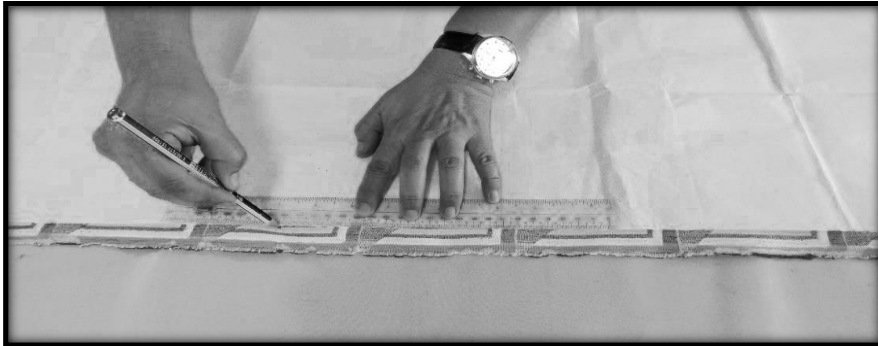
2. Lay the drafted pattern on top of the fabric.



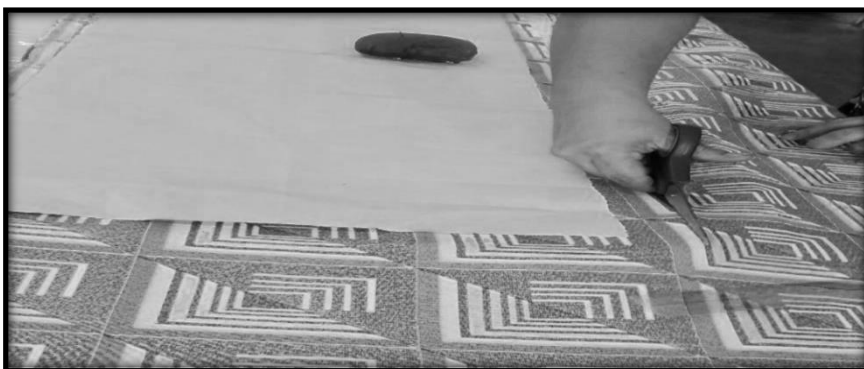
3. Pin the pattern on the fabric to keep in place.



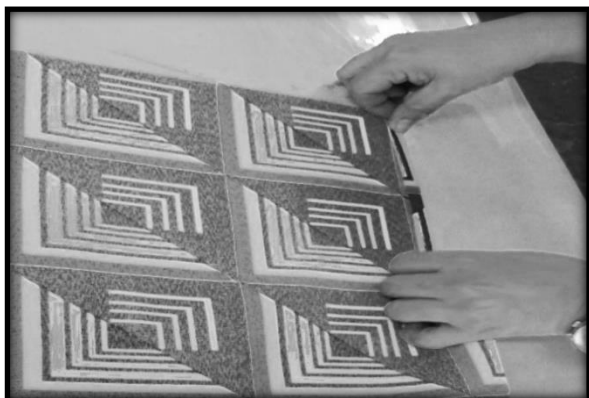
4. From the edges of the pattern, mark with ½- inch allowance on the fabric.



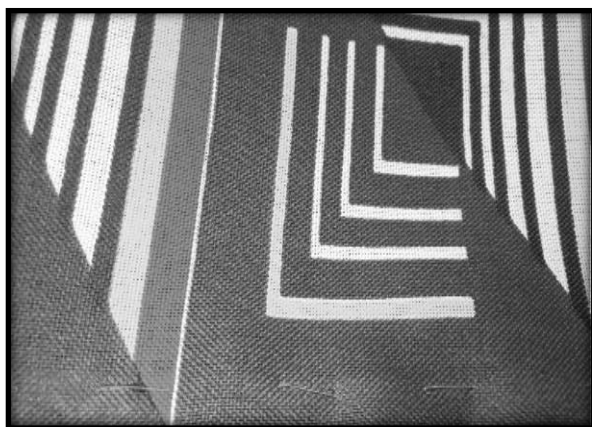
5. Cut the fabric all around the pattern.



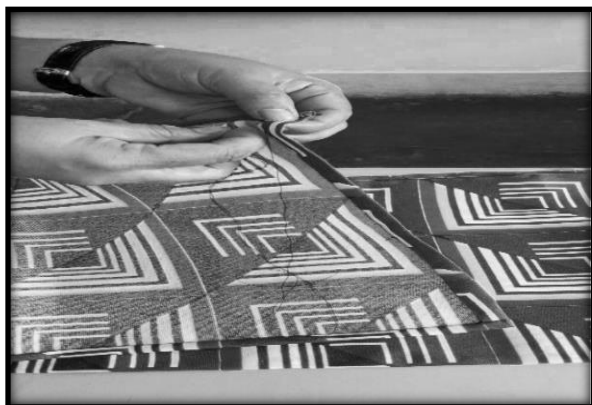
6. To form the hem, fold the ½- inch allowance inward. Then, pin.



7. Baste it all around to keep the fold in place.



8. Stitch/Sew the hem by hand all around.



9. Check each part and remove hanging threads.



10. Press/Iron the fabric.





What's More

Activity 1 *Sewing creative and marketable household linen (table runner)*

Situation:

You were given a complete set of tools in sewing as well as a 1.5meter fabric by your teacher in TLE. Make or sew a simple but creative table runner following the correct procedure.

1. Lay the fabric on the table with the wrong side up.
2. Lay the drafted pattern on top of the fabric, pin.
3. Pin the pattern on the fabric to keep in place.
4. From the edges of the pattern, mark with $\frac{1}{2}$ inch allowance on the fabric.
5. Cut the fabric all around the pattern.
6. To form the hem, fold the $\frac{1}{2}$ inch allowance inward. Then, pin.
7. Baste it all around to keep the fold in place.
8. Stitch / Sew the hem by hand all around.
9. Check each part and remove hanging threads.
10. Press/ Iron the fabric.

Evaluate your work using the scoring rubric below:

PERFORMANCE RUBRIC

CRITERIA	Excellent 5	Very Satisfactory 3	Satisfactory 1
Tools	12 out of 12 tools were appropriately and correctly used.	8 out of 12 tools were appropriately and correctly used.	4 out of 12 tools were appropriately and correctly used.
Procedure	10 out of 10 steps were followed correctly.	7 out of 10 steps were followed correctly.	3 out of 10 steps were followed correctly.
Work Habits	Showed excellent sign of work habits.	Showed very good sign of work habits.	Showed a little sign of work habits.
General Appearance	Very pleasing, durable and presentable.	Pleasing, durable and presentable	Unpleasing, not durable.
Speed and Accuracy	Finished ahead of time, all measurements are correct.	Finished on time. Almost of the measurements are correct.	Finished more than allotted time. Some of the measurements are not correct.
TOTAL			

Total Score= _____out of 25 points possible.

Activity 2

A. Give the materials, tools, and equipment needed in sewing a table runner.

Materials	Tools	Equipment
1.	1.	1.
2.	2.	2.
3.	3.	3.
4.		
5.		

Activity 3

Below are the first five steps in sewing a table runner. Arrange the scrambled steps according to its proper procedure in sewing table runner. Write the letter of your answer in your answer sheets.

1. Lay the fabric on the table with the wrong side up.
2. Cut the fabric all around the pattern.
3. Pin the pattern or the fabric to keep in place.
4. Lay the drafted pattern on the top of the fabric, then pin.
5. From the edges of the pattern, mark with $\frac{1}{2}$ inch allowance on the fabric.
 - a. 23154
 - b. 34215
 - c. 12453
 - d. 14352

Activity 4

Below are the sixth to tenth steps in sewing table runner. Arrange the scrambled steps according to its proper procedure in sewing. Write the letter of your answer in your answer sheets.

6. To form the hem, fold the $\frac{1}{2}$ inch allowance inward, then pin.
7. Check each part and remove hanging threads.
8. Baste it all around to keep the fold in place.
9. Stitch / Sew the hem by hand all around.
10. Press / Iron the fabric.
 - a. 786910
 - b. 687109
 - c. 689710
 - d. 876109

Activity 5

Write T if the statement is True, and write F if otherwise. Write the letter of correct answer on your answer sheet.

- ____ 1. I laid the fabric on the table with the wrong side up.
- ____ 2. I laid the drafted pattern on top of the fabric and pinned.
- ____ 3. I pinned the pattern on the fabric to keep in place.
- ____ 4. I marked with $\frac{1}{4}$ inch allowance on the fabric from the edges of the pattern.
- ____ 5. I folded the $\frac{1}{2}$ inch allowance inward to form the hem and pinned.
- ____ 6. Basted the $\frac{1}{2}$ inch allowance all around to keep in place and sewn it by hand.
- ____ 7. I stitched the hemline by hand.
- ____ 8. I checked its parts and remove hanging threads.
- ____ 9. I washed the fabric.
- ____ 10. I pressed and ironed the fabric.



What I Have Learned

Fill each blank with the correct answer. Write your answer on a separate sheet of paper.

1. Lay the fabric on the table with the _____ side up.
2. Lay the drafted pattern on _____ of the fabric.
3. Pin the _____ on the fabric to keep in place.
4. From the edges of the pattern, mark with _____ inch allowance on the fabric.
5. Cut the fabric all _____ the pattern.
6. To form the hem, fold the _____ inch allowance inward. Then, pin.
7. Baste it all around to keep the _____ in place.
8. Stitch / Sew the _____ by hand.
9. Check its parts and remove _____ threads.
10. Press/ _____ the fabric.



What I Can Do

Make a pillow case following the correct steps/procedure below.

Procedure:

1. Fold the 2 inches allowance for the opening facing the wrong side. Fold the raw edge by $\frac{1}{4}$ inch and stitch close to the edge.
2. Use French seam in stitching the sides.
3. Stitch the three sides of the cloth with the right side out by $\frac{1}{8}$ inch away from the edge of the cloth.
4. Invert the pillow case with the wrong side out .
5. Stitch the three edges again by $\frac{1}{4}$ inch away from the edge.

Below is the scoring rubric for you to use in assessing your finished product (pillow case)

PERFORMANCE RUBRIC

CRITERIA	Excellent 5	Very Satisfactory 3	Satisfactory 1
Tools	All tools were appropriately and correctly used.	Some tools were appropriately and correctly used.	No tools were appropriately and correctly used.
Procedure	5 out of 5 steps were followed correctly.	3 out of 5 steps were followed correctly.	1 out of 5 steps were followed correctly.
Work Habits	Showed excellent sign of work habits.	Showed very good sign of work habits.	Showed a little sign of work habits.
General Appearance	Very pleasing, durable and presentable.	Pleasing, durable and presentable	Unpleasing, not durable.
Speed and Accuracy	Finished ahead of time, all measurements are correct.	Finished on time. Almost of the measurements are correct.	Finished more than allotted time. Some of the measurements are not correct.
TOTAL			

Total Score= _____ out of 25 points possible



Assessment

Arrange the steps in sewing a table runner by putting the number 1-10 in their proper order. Copy and write your answer on the space provided before the sentence.

- ___ Check its parts and remove hanging threads.
- ___ Lay the drafted pattern on the fabric.
- ___ Sew the hemline all around the fabric by hand.
- ___ Lay the fabric on the table.
- ___ Press.
- ___ From the edges of the pattern, mark the fabric with $\frac{1}{2}$ inch allowance.
- ___ Cut the fabric.
- ___ Baste the hem all around to keep the fold in place.
- ___ To form the hem, fold the $\frac{1}{2}$ inch allowance inward.
- ___ Pin the pattern on the fabric to keep in place.



Additional Activities

Sew a table napkin or hand towel out of an old blanket you have brought following the correct steps in 50 minutes.

Steps in Sewing Table Napkin and Hand towel

1. Fold the $\frac{5}{8}$ allowance of the cloth.
2. Fold the raw edge by $\frac{1}{4}$ inch.
3. Stitch close to the edge.



Answer Key

<p>Assessment</p> <p>9 2 8 1 10 4 5 7 6 3</p>	<p>What's More</p> <p>Activity 1 Refer to rubrics(page16) Activity 2 Refer to pages 11-14 Activity 2.2 1. D 2. C Activity 3.1 1. T 2. T 3. T 4. T 5. T 6. T 7. T 8. T 9. F T</p>	<p>What I Know</p> <p>1. b 2. a 3. b 4. b 5. a 6. c 7. b 8. d 9. d 10. d</p>
--	---	---

References

- K to 12 Curriculum Guides, 2016, Technology and Livelihood Education, Grade-6-Home Economics, Sewing of Household Linens, pp. 36-37
- Home Life 6- Entrepreneurship and ICT, Agriculture, Home Economics, Industrial Arts Rosario B. Buturan et.al, 2016 pp. 165-167

For inquiries or feedback, please write or call:

Department of Education - Bureau of Learning Resources (DepEd-BLR)

Ground Floor, Bonifacio Bldg., DepEd Complex
Meralco Avenue, Pasig City, Philippines 1600

Telefax: (632) 8634-1072; 8634-1054; 8631-4985

Email Address: blr.lrqad@deped.gov.ph * blr.lrpd@deped.gov.ph